



**HAL**  
open science

# Spectral broadening of acoustic waves by convected vortices

Vincent Clair, Gwenael Gabard

► **To cite this version:**

Vincent Clair, Gwenael Gabard. Spectral broadening of acoustic waves by convected vortices. *Journal of Fluid Mechanics*, 2018, 841, pp.50 - 80. 10.1017/jfm.2018.94 . hal-01877638

**HAL Id: hal-01877638**

**<https://univ-lemans.hal.science/hal-01877638v1>**

Submitted on 20 Sep 2018

**HAL** is a multi-disciplinary open access archive for the deposit and dissemination of scientific research documents, whether they are published or not. The documents may come from teaching and research institutions in France or abroad, or from public or private research centers.

L'archive ouverte pluridisciplinaire **HAL**, est destinée au dépôt et à la diffusion de documents scientifiques de niveau recherche, publiés ou non, émanant des établissements d'enseignement et de recherche français ou étrangers, des laboratoires publics ou privés.

# Spectral broadening of acoustic waves by convected vortices

Vincent Clair<sup>1, 2†</sup> and Gwénaél Gabard<sup>1</sup>

<sup>1</sup>Institute of Sound and Vibration Research, University of Southampton  
Southampton, SO17 1BJ, UK

<sup>2</sup>Univ Lyon, École Centrale de Lyon, LMFA UMR CNRS 5509, F-69134 Écully, France

(Received xx; revised xx; accepted xx)

In this paper the scattering of acoustic waves by a moving vortex is studied in two dimensions to bring further insight in the physical mechanisms responsible for the spectral broadening caused by a region of turbulence. When propagating through turbulence, a monochromatic sound wave will be scattered over a range of frequencies, resulting in typical spectra with broadband sidelobes on either side of the tone. This spectral broadening, also called ‘haystacking’, is of importance for noise radiation from jet exhausts and for acoustic measurements in open-jet wind tunnels. A semi-analytical model is formulated for a plane wave scattered by a vortex, including the influence of the convection of the vortex. This allows to perform a detailed parametric study of the properties and evolution of the scattered field. A time-domain numerical model for the linearised Euler equations is also used to consider more general sound fields, such as that radiated by a point source in a uniform flow. The spectral broadening stems from the combination of the spatial scattering of sound due to the refraction of waves propagating through the vortex, and two Doppler shifts induced by the motion of the vortex relative to the source, and of the observer relative to the vortex. The fact that the spectrum exhibits sidebands is directly explained by the directivity of the scattered field which is composed of several beams radiating from the vortex. The evolution of the acoustic spectra with the parameters considered in this paper are compared with the trends observed in previous experimental work on acoustic scattering by a jet shear layer.

† Email address for correspondence: [vincent.clair@ec-lyon.fr](mailto:vincent.clair@ec-lyon.fr)

## 1. Introduction

When acoustic waves propagate through a volume of turbulence, the unsteady scattering results in a spatial redistribution of the acoustic energy as well as an alteration of the spectral content of the waves. Such scattering is observed, for example, when tones generated by the turbine stages of a turbofan engine are radiated from the exhaust through the turbulent shear layers developing downstream of the engine. The tonal components of the acoustic spectra measured in the far-field tend to be attenuated, and a broadband component is observed around the tones. Similar observations are made when acoustic measurements are carried out in open-jet wind tunnels and microphones are located outside of the jet flow. The scattering of sound also received attention in the domain of atmospheric propagation. Sounding techniques using an emitter and a receiver, associated with models of the scattering by a turbulent atmosphere have been developed to deduce characteristics of the turbulence (intensity, length scales).

Spectral broadening occurs when the base flow is evolving in time, either because of the convection of the turbulence (relative to the source of the observer) or because of the loss of temporal correlation associated with non-frozen turbulence. This was observed experimentally by Candel *et al.* (1975, 1976*a,b*) and Schlinker & Amiet (1980) in the effect of the turbulent shear layer of an open-jet wind tunnel on acoustic measurements performed outside the jet flow when a time-harmonic source was placed on the jet centerline. The measured spectra displayed a number of characteristic features: the peak at the source frequency is attenuated and surrounded by two sidebands, also called a ‘haystack’. These experiments, as well as more recent measurements by Kröber *et al.* (2013) and Sijtsma *et al.* (2014), investigated the evolutions of the sidebands with the source frequency and the jet velocity. Candel *et al.* (1975) suggested that the positions of the maxima of the sidebands relative to the peak can be related to a macro-scale of the turbulence by a Doppler effect.

Lighthill (1953) and Kraichnan (1953) developed the first theoretical models for acoustic scattering by turbulent flows, both using Lighthill’s acoustic analogy. Assuming that the scattering is weak, i.e. the proportion of scattered energy is small, Lighthill’s work focused on the description of spatial scattering while Kraichnan also derived expressions for the acoustic spectrum scattered by isotropic turbulence. Howe (1973) developed a set of kinematic equations, in which the different terms can be related either to spatial or spectral scattering. This model includes the effect of multiple scattering that can appear if the turbulent volume is large enough so that acoustic waves are scattered successively by numerous eddies, while previous models were restricted to the hypothesis of single scattering (usually using the Born approximation). Brown (1974) and Brown & Clifford (1973, 1976) developed an analytical model for the scattered intensity based on an inhomogeneous Helmholtz equation with a source term involving velocity and temperature fluctuations. The parabolic equation has been used to derive both analytical Ostashev *et al.* (2001) and numerical Dallois *et al.* (2001) models for the evolution of the sound pressure level with the propagation distance through turbulence. Most of the semi-analytical and numerical models found in the literature rely on the use of a stochastic method to describe the turbulent field. Goedecke *et al.* (2001) start from the calculation of the scattering by a single eddy convected in a mean wind. It is then coupled to a discretisation of the turbulent volume in a collection of cells, each containing an eddy. Wilson *et al.* (2004) apply a similar method, but use a quasi-wavelet method to describe a stationary turbulent velocity field over a barrier and estimate the sound field scattered behind the barrier. Stochastic methods based on a sum of spatial Fourier modes have also been used, for example by Karweit *et al.* (1991) with a ray tracing technique to study

the phase variance of acoustic waves propagating through turbulence, or by Cheinet *et al.* (2012) and Ehrhardt *et al.* (2013) combined with a finite-difference time-domain method for the propagation of sound. The scattering by a region of turbulent temperature fluctuations has been investigated by Hargreaves *et al.* (2014) using a  $k$ -space numerical model. Campos (1978*a,b*) developed an analytical model and derived low- and high-frequency approximations for the scattering by a shear layer. Applications of this model to the data from Candel *et al.* (1975) showed good predictions of the overall trends followed by the sidebands. Other models developed for similar configurations include the work of Guédél (1985), based on Lighthill's analogy with a low-frequency assumption, and the work of Powles *et al.* (2011) and McAlpine *et al.* (2013) using high-frequency asymptotics and a weak scattering assumption.

First attempts at numerical simulations were reported by Ewert *et al.* (2008, 2009) who solved the Linearised Euler Equations together with a stochastic method to synthesise the turbulence in a shear layer. Despite issues in the choice of parameters, the method showed promising results in its ability to recover features of the spectral broadening. Recently, a Large Eddy Simulation of the scattering by a mixing layer was carried out by Bennaceur *et al.* (2016). The results were compared against available experimental data with similar non-dimensional scattering parameters and good agreement was found for the shape and position of the sidebands.

On the one hand, previous theoretical studies of spectral broadening had to apply a number of simplifications, such as the Born approximation for the scattering. As a result, the detailed properties of the scattered field were lost, and often not discussed in any detail. On the other hand, numerical simulations of the scattering by a shear layer have the advantage of providing a complete description of the physical problem and the results are more directly comparable to experimental data. But these simulations combine a large number of different physical processes (scattering by individual vortices of varying sizes, convection and sweeping of these vortices, refraction by the mean shear layer, turbulence noise, etc) that make it difficult to identify precisely the mechanisms responsible for the spectral broadening.

The present work considers a simplified two-dimensional situation with a single vortex scattering a given sound field to provide further details on scattering by turbulence. The characteristic shape of the sidebands observed on the acoustic spectra as well as the effects of various parameters can be explained by the directivity of the scattered field combined with the different Doppler shifts due to the relative motions of the source, vortex and observer.

Two different models are used for this purpose. First, a semi-analytical method is presented in Section 2 to study the scattering of plane waves by a steady vortex. It is based on the Linearised Euler Equations solved in the frequency domain for a plane wave scattered by a steady vortex. No simplification is made regarding the sound frequency or the size and strength of the vortex. This model is relatively fast and allows for a thorough parametric study of the scattered field. For instance, the transition and radical changes in the scattering between the low- and high-frequency domains are described in detail.

For a steady vortex, only spatial scattering is observed and spectral broadening is only observed when the vortex is moving relative to the source or observer. The semi-numerical method is therefore extended in Section 3 to account for the Doppler shifts due to the relative motion between the vortex and the observer. The resulting acoustic spectra display sidebands around a peak at the source frequency, presenting similarities with the sidebands observed in experimental studies of the scattering by a turbulent shear layer. The analysis of the model shows that the shape and position of the sidebands are directly explained by the directivity of the scattered field from the vortex, associated to

a Doppler effect due to the motion of the vortex. The dependence of the spectra on the source frequency and convection velocity is also consistent with previous observations of haystacking.

In addition, a fully numerical method is used to consider more general incident sound fields, since the first model is limited to plane waves. It also relies on the Linearised Euler Equations, but solved in the time domain with a finite-difference approach. It provides verification results for the first model in Sections 2 and 3. Then in Section 4 it is used to consider the scattering of the sound field radiated by a fixed point source. This test case completes the description of the Doppler effects involved in the spectral broadening, in particular due to the motion of the vortex relative to the source.

## 2. Sound scattering by a steady vortex

Before discussing the spectral broadening induced by moving vortices (see Section 3) it is necessary to describe in detail the sound scattering by a steady vortex. A number of authors have treated this problem analytically under the low frequency limit, such as Ferziger (1974), Howe (1975), O'Shea (1975), Colonius *et al.* (1994) or more recently Ford & Llewellyn Smith (1999) and Llewellyn Smith & Ford (2001*a,b*) using matched asymptotic expansions. For high frequencies, Georges (1972) suggested the use of a ray tracing technique to determine the ray paths and Colonius *et al.* (1994) extended this approach by calculating the amplitudes and phases of the waves. Candel (1979) used a parabolic approximation to perform computations of the scattering of plane waves by cylindrical inhomogeneities of the refraction index, such as a vortex core. Direct numerical simulations were performed by Colonius *et al.* (1994) in two dimensions and later by Hattori & Llewellyn Smith (2002) in three dimensions, again for relatively low frequencies of the incident waves relative to the vortex core dimension. This section presents two models and a parametric study to provide a thorough discussion of the scattering by a steady vortex in two dimensions. These models do not rely on approximations for either low or high frequencies, or for weak vortices (i.e.  $M_v$  small).

The propagation and refraction of small-amplitude acoustic waves through a vortex can be described by the linearised Euler equations (LEE), written here in non-conservative form for isentropic perturbations:

$$\begin{aligned} \frac{\partial \rho'}{\partial t} + \mathbf{u} \cdot \nabla \rho' + \mathbf{u}' \cdot \nabla \rho + \rho \nabla \cdot \mathbf{u}' + \rho' \nabla \cdot \mathbf{u} &= 0, \\ \frac{\partial \mathbf{u}'}{\partial t} + (\mathbf{u} \cdot \nabla) \mathbf{u}' + (\mathbf{u}' \cdot \nabla) \mathbf{u} + \frac{\nabla p'}{\rho} - \rho' \frac{\nabla p}{\rho^2} &= \mathbf{0}, \\ \frac{\partial p'}{\partial t} + \mathbf{u} \cdot \nabla p' + \mathbf{u}' \cdot \nabla p + \gamma p \nabla \cdot \mathbf{u}' + \gamma p' \nabla \cdot \mathbf{u} &= 0, \end{aligned} \quad (2.1)$$

where  $\rho$ ,  $\mathbf{u}$  and  $p$  denote the base flow properties, and the acoustic fluctuations are  $\rho'$ ,  $\mathbf{u}'$  and  $p'$ .

In this paper, following Colonius *et al.* (1994), an inviscid vortex with zero circulation is considered. The following expressions for the velocity, density and pressure in the base flow are solutions of the Euler equations (using polar coordinates  $r$  and  $\theta$  centered on the vortex):

$$\begin{aligned} \mathbf{u}(r) &= U_v \frac{r}{L} \exp\left[\frac{1}{2}(1 - r^2/L^2)\right] \mathbf{e}_\theta, \\ p(r) &= p_\infty \left[1 - \frac{\gamma - 1}{2} M_v^2 \exp(1 - r^2/L^2)\right]^{\gamma/(\gamma-1)}, \\ \rho(r) &= \rho_\infty [p(r)/p_\infty]^{1/\gamma}, \end{aligned} \quad (2.2)$$

where  $\rho_\infty$ ,  $p_\infty$  and  $c_\infty$  are the density, pressure and sound speed in the fluid at rest, related by  $\rho_\infty c_\infty^2 = \gamma p_\infty$  with  $\gamma$  the heat capacity ratio. The unit vectors of the cylindrical coordinates are denoted by  $(\mathbf{e}_r, \mathbf{e}_\theta)$ . The vortex is characterised by its maximum velocity  $U_v$  and its core size  $L$ , so that  $u_\theta(r = L) = U_v$ . We also define the associated Mach number of the vortex  $M_v = U_v/c_\infty$ .

### 2.1. Numerical model

The linearised Euler equations (2.1) are solved in the time domain using a high-order, finite-difference method. Spatial derivatives are approximated using 7-point, 4<sup>th</sup> order Dispersion Relation Preserving (DRP) stencils (Tam 2012). An explicit, 8<sup>th</sup> order filter

is applied to damp high-frequency spurious oscillations. The time integration is performed using the standard 4<sup>th</sup>-order Runge–Kutta scheme. Cartesian grids are used throughout this work. Outgoing waves are absorbed by buffer zones with artificial damping around the domain. One-dimensional characteristic boundary conditions are applied on the last grid points (Thompson 1987). Tam & Dong (1996) radiation and outflow boundary conditions are also available. The incident sound field (either a plane wave or the sound generated by a mass source) is introduced in the simulation through a relaxation term in the buffer zones. These numerical schemes are implemented in the PIANO solver developed by DLR (Ewert *et al.* 2008, 2009) and used in this work.

## 2.2. Semi-analytical model

The starting point is the linearised Euler equations (2.1), written in cylindrical coordinates using vector notation:

$$\frac{\partial \mathbf{q}'}{\partial t} + \mathbf{A}\mathbf{q}' + \mathbf{B}\frac{\partial \mathbf{q}'}{\partial r} + \mathbf{C}\frac{1}{r}\frac{\partial \mathbf{q}'}{\partial \theta} = \mathbf{0}, \quad (2.3)$$

where  $\mathbf{q}' = (\rho', \mathbf{u}', p')^T$  and

$$\mathbf{A} = \begin{bmatrix} 0 & \frac{\rho}{r} + \frac{d\rho}{dr} & 0 & 0 \\ \frac{-u_\theta^2}{\rho r} & 0 & \frac{-2u_\theta}{r} & 0 \\ 0 & \frac{du_\theta}{dr} + \frac{u_\theta}{r} & 0 & 0 \\ 0 & \frac{\gamma p}{r} + \frac{dp}{dr} & 0 & 0 \end{bmatrix}, \quad \mathbf{B} = \begin{bmatrix} 0 & \rho & 0 & 0 \\ 0 & 0 & 0 & \frac{1}{\rho} \\ 0 & 0 & 0 & 0 \\ 0 & \gamma p & 0 & 0 \end{bmatrix}, \quad \mathbf{C} = \begin{bmatrix} u_\theta & 0 & \rho & 0 \\ 0 & u_\theta & 0 & 0 \\ 0 & 0 & u_\theta & \frac{1}{\rho} \\ 0 & 0 & \gamma p & u_\theta \end{bmatrix}.$$

Note that the expressions for the coefficient matrices  $\mathbf{A}$ ,  $\mathbf{B}$  and  $\mathbf{C}$  have been simplified assuming the base flow is independent of  $\theta$  and has no radial velocity component.

The fluctuations  $\mathbf{q}'$  are written as the sum of a given incident field  $\mathbf{q}'_i = (\rho'_i, \mathbf{u}'_i, p'_i)^T$  and a scattered field  $\mathbf{q}'_s = (\rho'_s, \mathbf{u}'_s, p'_s)^T$ . Both are assumed to be time harmonic with angular frequency  $\omega$  and are decomposed into azimuthal components using a Fourier series in  $\theta$ :

$$\mathbf{q}'_i(r, \theta, t) = \sum_{m=-\infty}^{+\infty} \mathbf{q}'_{i,m}(r) e^{i\omega t - im\theta}, \quad \mathbf{q}'_s(r, \theta, t) = \sum_{m=-\infty}^{+\infty} \mathbf{q}'_{s,m}(r) e^{i\omega t - im\theta}. \quad (2.4)$$

Since the base flow is axisymmetric, the equation for each azimuthal order  $m$  is decoupled from the other orders. For the azimuthal order  $m$  the linearised Euler equations (2.1) yield

$$i\omega \mathbf{q}'_{s,m} + \mathbf{A}\mathbf{q}'_{s,m} + \mathbf{B}\frac{d\mathbf{q}'_{s,m}}{dr} - \frac{im}{r}\mathbf{C}\mathbf{q}'_{s,m} = -i\omega \mathbf{q}'_{i,m} - \mathbf{A}\mathbf{q}'_{i,m} - \mathbf{B}\frac{d\mathbf{q}'_{i,m}}{dr} + \frac{im}{r}\mathbf{C}\mathbf{q}'_{i,m}. \quad (2.5)$$

These ordinary differential equations are readily solved using a finite-difference approximation for the radial derivative. Here we use a 7 points, 4<sup>th</sup> order Dispersion-Relation-Preserving scheme on a uniform grid. The grid points are denoted by  $r_n$  with  $n = 1, \dots, N$  and the grid spacing by  $\Delta r$ .

Parity conditions should be satisfied at  $r = 0$  to ensure the regularity of the solution formulated in cylindrical coordinates (Lewis & Bellan 1990; Boyd 2001). Here we use a technique similar to that of Mohseni & Colonius (2000) where three ghost points are defined with negative  $r$  coordinates. They are mirror images of the first three physical points ( $r_{1-l} = -r_l$  with  $l = 1, 2$  and 3). By setting  $r_1 = -r_0 = \Delta r/2$  the singularity in the governing equations at  $r = 0$  lies between two grid points. The equations used for the ghost points are directly provided by the symmetry conditions for scalar fields of the

form (2.4):

$$\rho'(-r) = \rho'(r)e^{-im\pi}, \quad p'(-r) = p'(r)e^{-im\pi}, \quad (2.6)$$

and for vector fields

$$u'_r(-r) = -u'_r(r)e^{-im\pi}, \quad u'_\theta(-r) = -u'_\theta(r)e^{-im\pi}. \quad (2.7)$$

This technique yields solutions satisfying the parity conditions specified in Lewis & Bellan (1990).

Beyond some distance  $R$  away from the vortex, its induced velocity can be considered negligible and one is left with sound waves propagating in a uniform medium at rest. It follows that for  $r > R$  one can write the scattered field as a sum of progressive cylindrical waves satisfying the Helmholtz equation. Since the scattered field satisfies the Sommerfeld radiation condition, the solution for a given azimuthal order  $m$  reads

$$\mathbf{q}'_{s,m}(r) = A_m \begin{pmatrix} H_m^{(2)}(kr)/c_\infty^2 \\ iH_m^{(2)'}(kr)/(\rho_\infty c_\infty) \\ mH_m^{(2)}(kr)/(\rho_\infty \omega r) \\ H_m^{(2)}(kr) \end{pmatrix}, \quad \text{for } r > R, \quad (2.8)$$

where  $k = \omega/c_\infty$  is the free-field wavenumber and  $H_m^{(2)}$  is the  $m^{\text{th}}$  order Hankel function of the second kind. The grid is defined such that  $r_N = R$  and three ghost points are added:  $r_{N+l} = R + l\Delta r$  with  $l = 1, 2$  and  $3$ . The solution for these ghost points is given by (2.8) and the remaining coefficient  $A_m$  is written as a function of the solution at  $r_N$  by  $A_m = p'(r_N)/H_m^{(2)}(kR)$ .

When the observer is in the acoustic far field ( $kr \rightarrow \infty$ ) the multipole expansion (2.8) can be further simplified using the asymptotic expression for the Hankel function (Abramowitz & Stegun 1964, Chapter 9). The scattered field can then be written

$$p'_s(r, \theta, t) = \frac{D(\theta)}{\sqrt{r}} e^{i\omega(t-r/c_\infty)}, \quad \text{with } D(\theta) = \sqrt{\frac{2i}{k\pi}} \sum_{m=-M}^M i^m A_m e^{-im\theta}. \quad (2.9)$$

Note that the sum over the azimuthal orders can be truncated because the coefficients  $A_m$  decay rapidly for large values of  $|m|$ . For all the results presented below, convergence with respect to the grid resolution and the number of azimuthal orders included in (2.9) has been verified.

When the incident field is an acoustic plane wave propagating along the  $x$ -direction, the pressure can be written  $p'_i(r, \theta, t) = P e^{i\omega t - ikr \cos \theta}$ . Its expansion (2.4) in terms of Fourier components gives

$$\mathbf{q}'_{i,m}(r) = P i^{-m} \begin{pmatrix} J_m(kr)/c_\infty^2 \\ iJ'_m(kr)/(\rho_\infty c_\infty) \\ mJ_m(kr)/(\rho_\infty \omega r) \\ J_m(kr) \end{pmatrix}, \quad (2.10)$$

where  $J_m$  is the  $m^{\text{th}}$  order Bessel function of the first kind.

### 2.3. Test case

The test case previously considered by Colonius *et al.* (1994) provides a benchmark to verify the time-domain numerical model and the frequency-domain semi-analytical model. It involves the scattering of a time-harmonic plane wave propagating in the positive  $x$  direction by the steady vortex defined by equation (2.2). The parameters



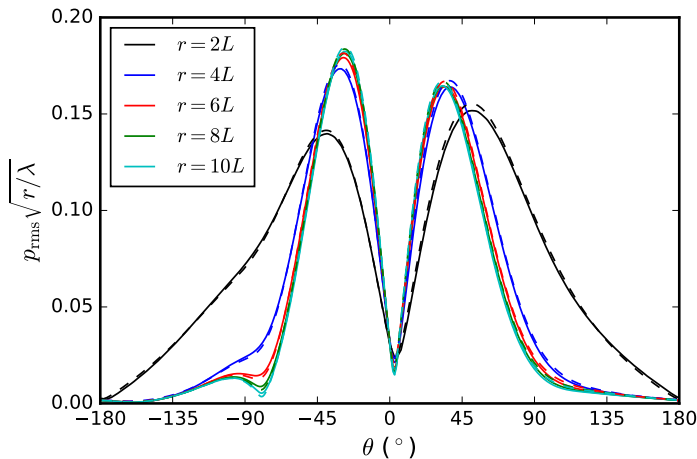


FIGURE 1. Amplitude of the scattered field (root-mean-squared pressure) at different distances from the vortex and calculated by the time-domain numerical model (solid lines) and the frequency domain model (dashed lines). Other parameters are  $M_v = 0.125$  and  $kL = \pi/2$ , corresponding to  $\lambda = 4L$ . The results are normalised by the cylindrical spreading  $1/\sqrt{r}$  and the angle  $\theta$  is measured from the incident wave direction.

are made non-dimensional by setting  $c_\infty = 1$ ,  $\rho_\infty = 1$  and  $L = 1$ . The frequency is given by the Helmholtz numbers  $kL = \omega L/c_\infty = \pi/2$ , corresponding to an acoustic wavelength  $\lambda = c_\infty/f = 4L$ . The vortex velocity is  $M_v = 0.125$  and the amplitude of the incident wave is  $P = 1$ .

For the time-domain numerical model a uniform Cartesian grid is used with resolution  $\Delta x = \Delta y = L/8$ , providing 16 grid points across the core of the vortex. The physical region of the computational domain extends between  $-15L \leq x \leq 15L$  and  $-15L \leq y \leq 15L$  and is surrounded by a buffer zone with 50 grid points. The time step corresponds to a Courant number  $c_\infty \Delta t / \Delta x = 0.9$ . The simulations are run until the solutions reach a periodic state.

For the semi-analytical model, the domain  $0 \leq r \leq 15$  (thus  $R = 15L$ ) is discretised with 150 grid points. The equations (2.5) are solved for every azimuthal order between  $-30 \leq m \leq 30$ .

To validate the two models and compare with the results from Colonius *et al.* (1994) the root-mean-square pressure of the scattered field is plotted in Figure 1 as a function of direction for several distances from the vortex from  $r = \lambda_0/2$  to  $r = 2.5\lambda_0$ . The scattered pressure is scaled by  $\sqrt{r}$  to show that the cylindrical spreading is observed away from the vortex. We can see that there is excellent agreement between the two models and the results are also in good agreement with Figure 11 in Colonius *et al.* (1994) (note that the  $\theta$  coordinates is reversed since the vortex is spinning in the opposite direction). A similar level of accuracy is observed for the phase of the scattered field. Very good agreement has also been observed for a number of other test cases solved using the two models.

#### 2.4. Spatial scattering

Figure 2 shows examples of the total and scattered fields. In this case the scattering of the plane wave is relatively mild and there is only a slight alteration of the wave fronts due to the mean flow refraction. As was already visible from Figure 1, the scattered field is formed of two beams on either side of the incident wave direction. These beams differ only slightly in direction and amplitude but they can be seen in Figure 2b to be out of

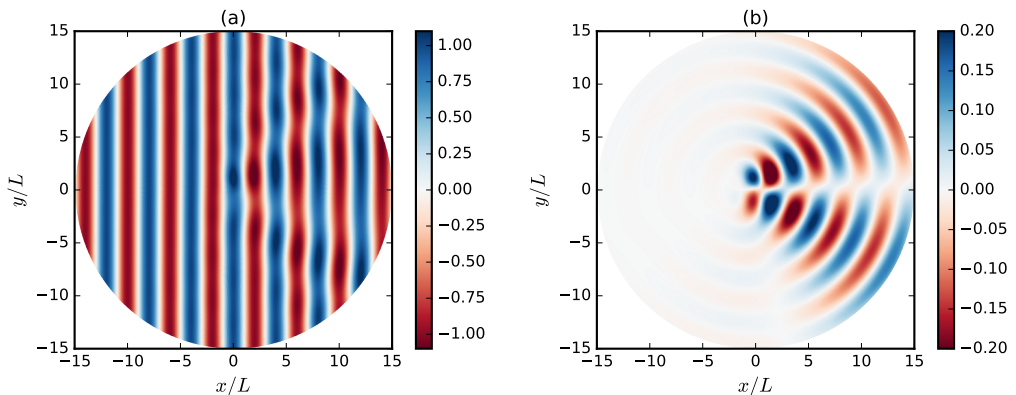


FIGURE 2. Snapshots of (a) the total and (b) the scattered pressure fluctuations calculated with the semi-analytical model for  $M_v = 0.125$  and  $kL = \pi/2$ .

phase. Their presence can be explained easily by the refraction effect due to the mean flow gradients inside the vortex (see Figure 17 in Colonius *et al.* (1994) for an illustration of this effect in terms of acoustic rays). Figure 1 indicates that there is also a much weaker beam radiated at an angle close to  $-100^\circ$ . But overall, for these parameters, there is very little sound scattered back in the negative  $x$  direction.

We will see in Section 3 that the properties of haystacking are directly related to the directions and strengths of the scattered beams radiated from a steady vortex. It is therefore important to describe their properties in more detail. The two parameters influencing the spatial scattering by a steady vortex are (i) the ratio between the acoustic wavelength  $\lambda$  and the vortex radius  $L$ , characterised by the Helmholtz number  $kL = 2\pi L/\lambda$  and (ii) the strength of the vortex, characterised by the Mach number  $M_v$ . These parameters are now studied using the semi-analytical model since its speed allows to perform a detailed parametric study (the time-domain numerical model will be used for the convected vortex and for more complex incident sound fields). All results are shown for  $\rho_\infty = 1$ ,  $c_\infty = 1$ ,  $L = 1$  and  $P = 1$ .

#### 2.4.1. Influence of the Helmholtz number

To assess the influence of the Helmholtz number, it is varied between  $kL = \pi/5$  and  $8\pi$ , corresponding to an acoustic wavelength varying between  $10L$  and  $L/4$ . For each frequency, the discretization of the radial direction is chosen to obtain a converged solution. The number of azimuthal orders  $m$  included in the solution is also adjusted for each frequency and includes  $-120 \leq m \leq 120$  for the highest frequency. The resulting evolution of the directivity  $D(\theta)$  of the scattered field is shown in figure 3 for a relatively weak vortex with  $M_v = 0.05$  and for a stronger vortex with  $M_v = 0.15$ . The influence of the vortex strength is shown at four different frequencies in Figure 4 where the directivity  $D(\theta)$  of the scattered field defined in equation (2.9) is plotted for a range of values of  $M_v$  varying from 0.05 to 0.25.

First consider low frequencies ( $kL < 1$ ), corresponding to a small vortex relative to the acoustic wavelength. Figure 4a shows the directivity  $D(\theta)$  scaled by the Mach number  $M_v$  for  $kL = \pi/5$ . The directivity is symmetric across the direction of the incident wave and similar to that of a lateral quadrupole. The directivity of each scattered beam is well described by a sine function. The magnitude of the scattered field scales like  $M_v$  and is particularly weak compared to higher frequencies. These trends are consistent with the results from analytical models based on low frequency and low Mach number assumptions

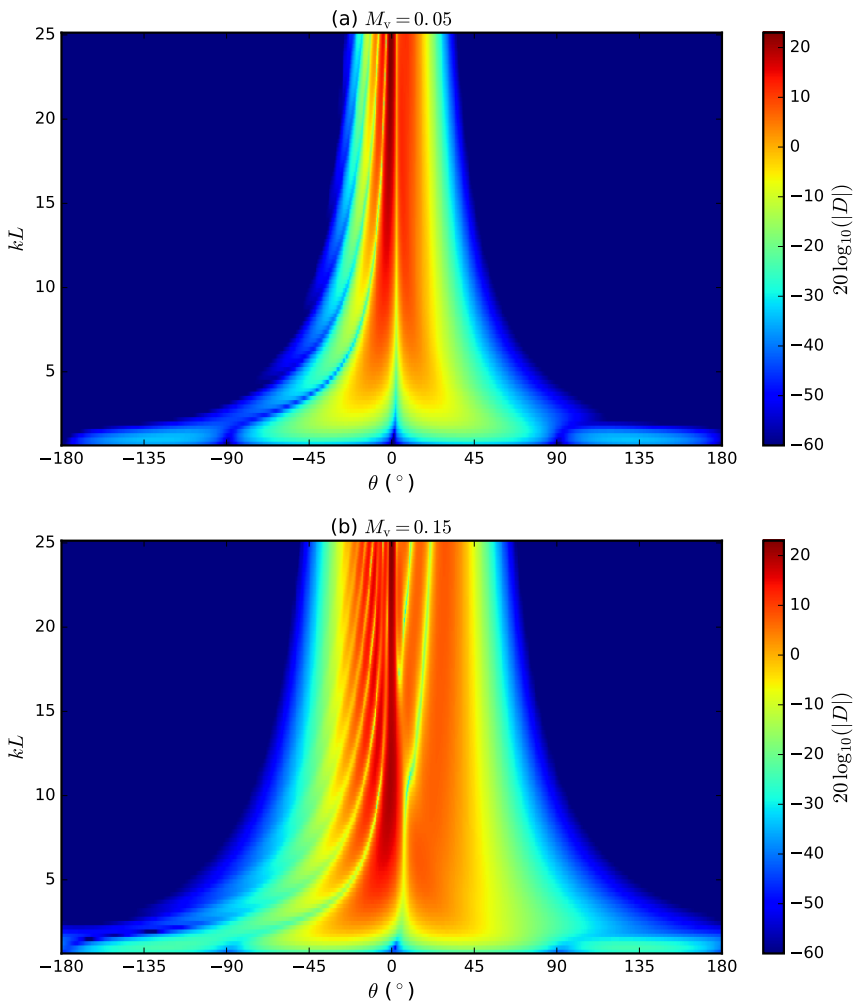


FIGURE 3. Directivity  $D(\theta)$  of the scattered pressure in the far field (plotting  $20 \log_{10}(|D|)$ ) as a function of the direction  $\theta$  and the Helmholtz number  $kL$  with a vortex magnitude (a)  $M_v = 0.05$  or (b)  $M_v = 0.15$ .  $\theta = 0^\circ$  corresponds to the direction of the incident wave.

(O'Shea 1975; Colonius *et al.* 1994). These models predicts a symmetric scattered field around  $\theta = 0^\circ$  and a linear growth of the scattered field with  $M_v$ .

The directivity is changing significantly for higher frequencies, as shown in Figure 3. The amount of backscattering ( $|\theta| > 90^\circ$ ) decreases rapidly for higher frequencies and the scattered field is progressively focused close to the direction of the incident wave. As the frequency increases, there is also a loss of symmetry between the upper and lower parts of the scattered field. The main beam below the  $x$  axis ( $\theta < 0$ ) becomes much stronger than the one above and moves closer to  $\theta = 0$ . In addition several smaller beams are observed at high frequencies, with more beams developing for  $\theta < 0$  than for  $\theta > 0$ , see for instance figures 4c and 4d. The strength of the scattered field increases rapidly with frequency, with nearly 3 orders of magnitude for the maximum value of the scattered field between the lowest and highest frequencies (see figures 4a and 4d).

For moderate frequencies,  $kL \simeq 1$  as in Figure 4b, there are two strong beams similar to those observed in Figure 1. The magnitude of the scattered field appears to scale like

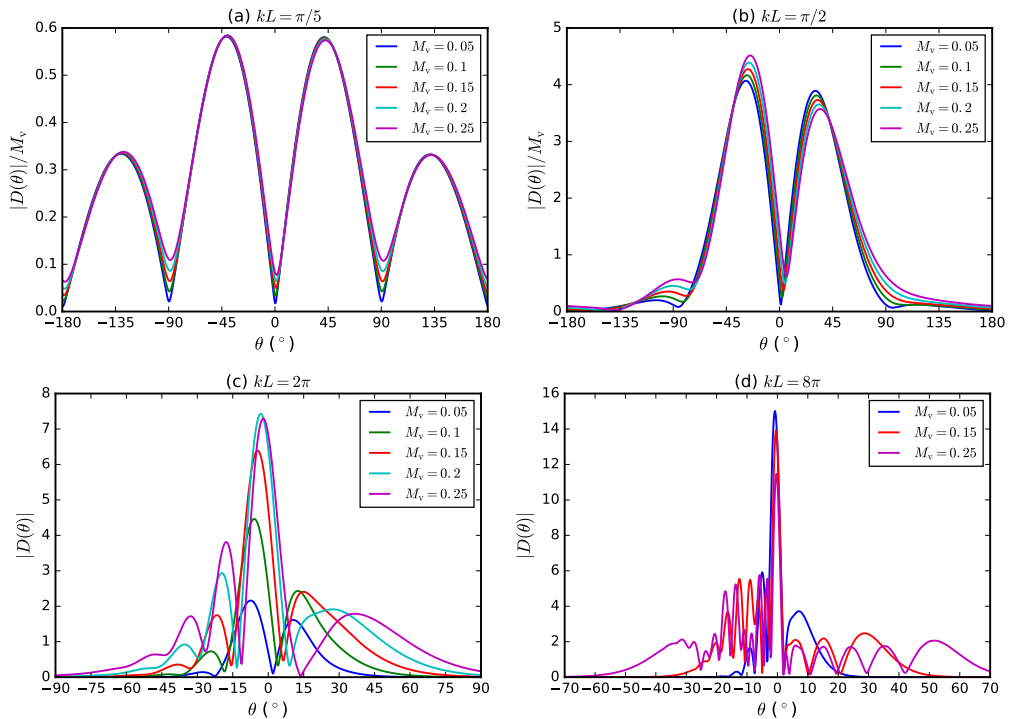


FIGURE 4. Directivity  $D(\theta)$  for four Helmholtz numbers (a)  $kL = \pi/5$ , (b)  $kL = \pi/2$ , (c)  $kL = 2\pi$  and (d)  $kL = 8\pi$  and for different vortex strengths from  $M_v = 0.05$  to  $0.25$ . Note that for the graphs (a) and (b) the directivity  $D(\theta)$  is scaled by the vortex Mach number  $M_v$ .

$M_v$ , at least qualitatively, but the details are slightly more complex and the asymmetry between the two beams increases for stronger vortices. The difference in amplitude between the two beams increases significantly with  $M_v$ , with the lower beam ( $\theta < 0$ ) becoming stronger than the upper beam ( $\theta > 0$ ). In addition the direction of the lower (resp. upper) beam moves closer to (resp. away from) the  $x$  axis. The presence of an asymmetric scattering has already been noted by Colonius *et al.* (1994) in their numerical study and has been attributed to the effects of terms with an order in  $M_v$  higher than those retained in their analytical model. While the present model also indicates that the two beams are almost symmetric for small  $M_v$ , it fully captures the effects of the vortex strength on the scattered field for any  $M_v$ .

At higher frequencies,  $kL > 1$ , a number of secondary lobes are visible in the directivity function, especially for  $\theta < 0^\circ$ , see Figure 3. This trend becomes even more significant for stronger vortices, as can be seen in figures 4c and 4d. This results in the scattered field covering a wider angular range than for weak vortices (this is visible when comparing figures 3a and 3b). A strong beam starts to dominate from the lower half ( $\theta < 0^\circ$ ) at mid-frequencies and is moving towards  $\theta = 0^\circ$  as the frequency increases. On the  $\theta > 0^\circ$  side, there is a single beam for weak vortices. For high frequencies, the magnitude of the directivity function  $D(\theta)$  does not scale linearly with the vortex strength  $M_v$ , see figures 4c and 4d.

The evolutions of the directions and magnitudes of the maxima of the scattered directivity are plotted in figure 5. For the weaker vortex with  $M_v = 0.05$ , it confirms that the maxima of the directivity move closer to  $\theta = 0^\circ$  when the Helmholtz number  $kL$  increases. The main beam is found in the lower half ( $\theta < 0$ ) and its amplitude grows

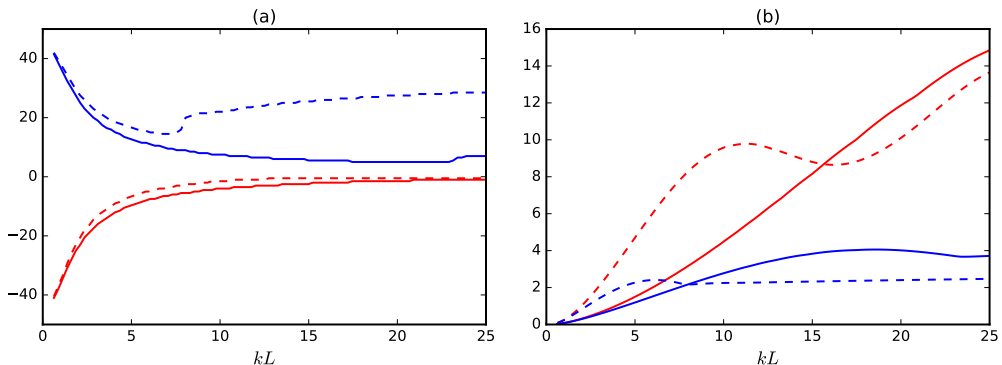


FIGURE 5. Evolution of (a) the angular positions  $\theta$  and (b) the amplitudes  $|D(\theta)|$  of the maxima of the scattered directivity with the incident wave Helmholtz number for (—)  $\theta > 0^\circ$  and (—)  $\theta < 0^\circ$  with a vortex magnitude  $M_v = 0.05$  (solid lines) and  $M_v = 0.15$  (dashed lines).

with  $kL$ . In contrast the beam in the upper half is weaker and its amplitude does not seem to evolve much at high frequency.

For the stronger vortex we see that the main beam (found for  $\theta < 0$ ) moves more rapidly towards  $\theta = 0$ . However, the beam in the upper half ( $\theta > 0$ ) moves towards the axis before moving away when  $kL > 7$ . The amplitude of the main beam increases more rapidly for Helmholtz numbers up to  $kL = 10$  compared to the case  $M_v = 0.05$ . It then stops to grow between  $10 < kL < 16$  before growing again at higher Helmholtz numbers. The amplitude of the main beam in the upper half is lower than that of the case  $M_v = 0.05$  and is almost constant for  $kL > 8$ .

#### 2.4.2. Conservation of acoustic energy

Since the incident sound wave interacts with a non-uniform base flow with non-zero mean vorticity, there is no guarantee that the acoustic energy is conserved by the scattering. However, Lighthill (Lighthill 1953) shows, in the small wavelength limit, that there is conservation of the acoustic energy and Howe's model (Howe 1973) indicates that the acoustic energy is conserved for frozen turbulence. The scattering process is therefore assumed to redistribute spatially the acoustic energy but not to act as a source or sink of energy. The validity of this assumption can be assessed using the solution from the semi-analytical model developed in Section 2.2.

The acoustic power is calculated over a circle surrounding the vortex with a radius  $r$  sufficiently large to be located where the mean flow is negligible:

$$W_t = \int_0^{2\pi} \frac{1}{2} \text{Re}(p'^* u_r') r d\theta, \quad (2.11)$$

where  $u_r'$  is the radial acoustic velocity and  $*$  is the complex conjugate. It is possible to show that the total power is the sum of two terms  $W_t = W_s + W_{si}$  where  $W_s$  is the power associated with the scattered field in isolation and  $W_{si}$  is the additional term due to the interference between the incident plane wave and the scattered field (the details of the derivation can be found in the Appendix A):

$$W_s = \frac{2}{\rho_\infty c_\infty k} \sum_{m=-\infty}^{+\infty} |A_m|^2, \quad W_{si} = \frac{2}{\rho_\infty c_\infty k} \sum_{m=-\infty}^{+\infty} \text{Re}(i^m A_m P^*). \quad (2.12)$$

These quantities are plotted in Figure 6a over a range of Helmholtz numbers  $kL$  and

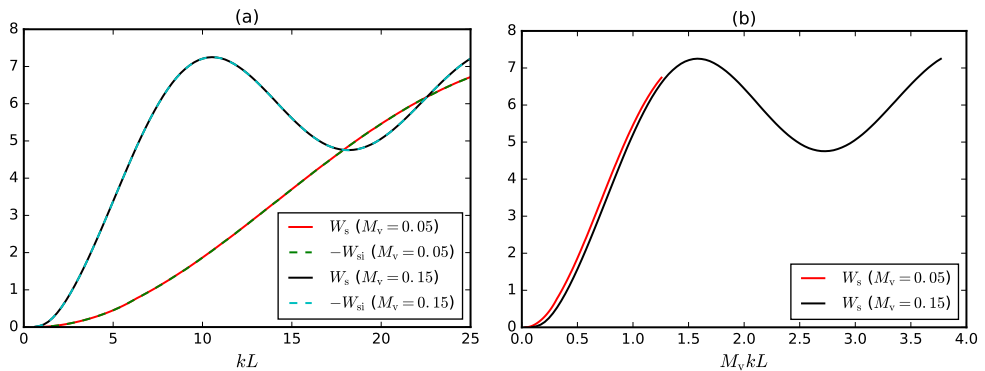


FIGURE 6. Acoustic power of the scattered field in isolation ( $W_s$ ) and of the interference between the scattered and incident fields ( $W_{si}$ ) for  $M_v = 0.05$  and  $0.15$ , plotted against (a)  $kL$  or (b)  $M_v kL$ .

for two vortex Mach numbers  $M_v = 0.05$  and  $0.15$ . It is clear that we have  $W_s = -W_{si}$  which implies that the total power is zero and that the acoustic energy is indeed conserved. The scattering by the vortex therefore appears not to transfer acoustic energy to vortical disturbances. It is clear that the scattered power increases much more rapidly with frequency in the case  $M_v = 0.15$  compared to  $M_v = 0.05$ , at least for  $kL < 10$ . For  $kL > 10$ ,  $W_s$  oscillates for  $M_v = 0.15$  but continues to increase for  $M_v = 0.05$ , until  $W_s$  is similar for the two vortex Mach numbers. Finally, it is interesting to note from Figure 6b that there is a good collapse of the results when plotted as functions of  $M_v kL$ , at least for low frequencies.

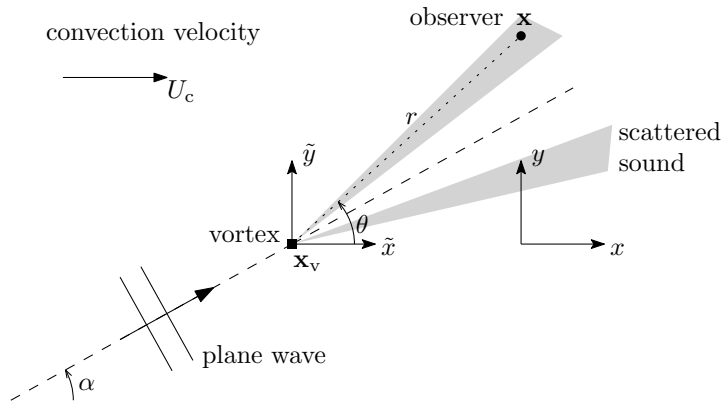


FIGURE 7. Schematic of the scattering of an acoustic plane wave by a convected vortex.

### 3. Scattering of an harmonic plane wave by a convected vortex

We now consider the case of a single vortex convected by a uniform background flow, as depicted in Figure 7. The uniform flow is along the  $x$  axis and has velocity  $U_c$  and Mach number  $M_c = U_c/c_\infty$ . The position of the vortex is given by  $x_v = U_c t$  and  $y_v = 0$ . The incident sound field is a plane wave with direction  $\alpha$  (measured from the positive  $x$  axis) and angular frequency  $\omega_s$ . We are interested in the pressure signal measured by a fixed observer located at  $(x, y)$ .

In addition to the spatial scattering of sound discussed in the previous section the motion of the vortex relative to the observer leads to spectral broadening of the initial sound spectrum (a pure tone in this case). This combined effect of the Doppler shift together with the vortex scattering is described using the frequency-domain semi-analytical model and the time-domain numerical model.

#### 3.1. Semi-analytical model

In the case of an incident plane wave, the semi-analytical model presented in Section 2.2 can be generalised to include the vortex convection. This is achieved by changing from the fixed frame of reference  $(x, y)$  used above to a frame of reference  $(\tilde{x}, \tilde{y})$  moving with the vortex. These two coordinate systems are related by

$$\tilde{x} = x - x_v = x - U_c t, \quad \tilde{y} = y - y_v = y. \quad (3.1)$$

When using the moving frame of reference  $(\tilde{x}, \tilde{y})$ , we recover a situation with no mean flow at infinity and a steady base flow, thus the model from Section 2.2 can be used. There are however two important changes associated with this change of frame of reference.

Firstly, in the fixed frame of reference, the pressure field of the incident plane wave is

$$p(x, y, t) = \exp(i\omega_s t - ikx \cos \alpha -iky \sin \alpha),$$

where the wavenumber  $k = \omega_s/(c_\infty + U_c \cos \alpha)$  accounts for the fact that the wave is propagating in a uniform mean flow. This definition of  $k$  is a direct consequence of the dispersion relation for acoustic plane waves in a uniform flow:

$$k^2 = \left( \frac{\omega_s}{c_\infty + U_c \cos \alpha} \right)^2.$$

See Morse & Ingard (1968, Section 11.1) or Goldstein (1976, Section 1.3.2) for more details. In the frame of reference moving with the vortex the incident field remains a

plane wave with a wavenumber  $k$ :

$$p(\tilde{x}, \tilde{y}, t) = \exp(i\omega_v t - ik\tilde{x} \cos \alpha - ik\tilde{y} \sin \alpha) .$$

Since the propagation velocity of the acoustic waves relative to the vortex is  $c_\infty$ , the incident plane wave is perceived in the moving frame at a Doppler-shifted frequency  $\omega_v$  given by

$$\omega_v = kc_\infty = \frac{\omega_s}{1 + M_c \cos \alpha} . \quad (3.2)$$

For any observer moving with the vortex, the incident and scattered sound fields are both time-harmonic with frequency  $\omega_v$ . It is only in the special case of a plane wave that the incident field remains tonal after changing the frame of reference. A more complex sound field, such as that radiated by a time-harmonic point source, will not be perceived as tonal noise in the moving frame of reference. This will be considered in Section 4.

Secondly, the scattered pressure signal measured by a fixed observer located at  $(x, y)$  in the fixed frame of reference can be obtained using equation (2.8):

$$p'_s(t) = \sum_{m=-\infty}^{+\infty} A_m H_m^{(2)}[k\tilde{r}(t)] \exp\{i\omega_v t - im[\tilde{\theta}(t) - \alpha]\} , \quad (3.3)$$

where  $(\tilde{r}, \tilde{\theta})$  are the polar coordinates centered on the vortex:

$$\tilde{r}(t) = \sqrt{\tilde{x}(t)^2 + \tilde{y}(t)^2} , \quad \tilde{\theta}(t) = \tan^{-1} [\tilde{y}(t)/\tilde{x}(t)] . \quad (3.4)$$

Note that in equation (3.3) the coefficients  $A_m$  are calculated at the frequency  $\omega_v$  and that the angular orientation of the scattered field is shifted by the angle of incidence  $\alpha$  of the plane wave. If the observer remains in the acoustic far field from the vortex we can use the asymptotic expression (2.9) to write:

$$p'_s(t) \simeq \frac{D[\tilde{\theta}(t) - \alpha]}{\sqrt{\tilde{r}(t)}} \exp\{i\omega_v [t - \tilde{r}(t)/c_\infty]\} . \quad (3.5)$$

In addition to the Doppler shift (3.2) there is also a Doppler shift associated with the relative motion between the observer and the vortex. In equation (3.5) this is captured by the time dependence of  $\tilde{r}$  in the argument of the exponential. We can define the instantaneous angular frequency  $\omega_o$  perceived by the observer as follows:

$$\omega_o(t) = \frac{\partial}{\partial t} \{\omega_v [t - \tilde{r}(t)/c_\infty]\} = \omega_v [1 + M_c \cos \tilde{\theta}(t)] = \omega_s \frac{1 + M_c \cos \tilde{\theta}(t)}{1 + M_c \cos \alpha} . \quad (3.6)$$

Note that this second Doppler shift can also be understood in the frame of reference moving with the vortex. In this frame of reference the vortex is emitting scattered waves in a quiescent medium with wavenumber  $k$ . The observer being in motion, it is receiving waves with a relative propagation velocity  $c_\infty + U_c \cos \tilde{\theta}(t)$  at a frequency

$$\omega_o = k(c_\infty + U_c \cos \tilde{\theta}(t)) = \omega_s \frac{1 + M_c \cos \tilde{\theta}(t)}{1 + M_c \cos \alpha} .$$

The ratio between two Doppler factors shows that the effective frequency perceived by the observer is the result of two Doppler shifts, first due to the relative motion between the source and vortex; and second between the vortex and the observer.



## 3.2. Numerical model

The numerical method presented in Section 2.1 can also be used with an unsteady base flow as the governing equations (2.1) remain valid when the base flow properties  $\mathbf{u}$ ,  $\rho$  and  $p$  are varying in time. It is useful to separate the base flow into steady and unsteady components by writing  $(\rho, \mathbf{u}, p) = (\rho_0, \mathbf{u}_0, p_0) + (\rho_t, \mathbf{u}_t, p_t)$  where the subscripts 0 and t denote the steady and unsteady components, respectively. For the convected vortex these are given by:

$$\mathbf{u}_0 = U_c \mathbf{e}_x, \quad p_0 = p_\infty, \quad \rho_0 = \rho_\infty, \quad (3.7)$$

and

$$\begin{aligned} \mathbf{u}_t(\tilde{r}) &= U_v \frac{\tilde{r}}{L} \exp\left[\frac{1}{2}\left(1 - \tilde{r}^2/L^2\right)\right] \mathbf{e}_\theta, \\ p_t(\tilde{r}) &= p_\infty \left[1 - \frac{\gamma - 1}{2} M_v^2 \exp\left(1 - \tilde{r}^2/L^2\right)\right]^{\gamma/(\gamma-1)} - p_\infty, \\ \rho_t(\tilde{r}) &= \rho_\infty \left[1 + p_t(\tilde{r})/p_\infty\right]^{1/\gamma} - \rho_\infty, \end{aligned} \quad (3.8)$$

where the vector basis in Cartesian coordinates is denoted by  $(\mathbf{e}_x, \mathbf{e}_y)$ .

In the present work, it is assumed that the unsteady density and pressure components associated with the vortex in the base flow do not have a significant influence on the scattering of the acoustic wave. Appendix B shows that  $p_t$  and  $\rho_t$  can indeed be ignored without any significant change in the solutions.

After splitting the base flow as explained above, noting that  $\nabla \cdot \mathbf{u}_t = 0$  from the definition of  $\mathbf{u}_t$  in equation (3.8) and ignoring the terms in  $p_t$  and  $\rho_t$ , the governing equations (2.1) can be written:

$$\begin{aligned} \frac{\partial \rho'}{\partial t} + \mathbf{u}_0 \cdot \nabla \rho' + \mathbf{u}' \cdot \nabla \rho_0 + \rho_0 \nabla \cdot \mathbf{u}' + \rho' \nabla \cdot \mathbf{u}_0 &= -\mathbf{u}_t \cdot \nabla \rho', \\ \frac{\partial \mathbf{u}'}{\partial t} + (\mathbf{u}_0 \cdot \nabla) \mathbf{u}' + (\mathbf{u}' \cdot \nabla) \mathbf{u}_0 + \frac{\nabla p'}{\rho_0} - \rho' \frac{\nabla p_0}{\rho_0^2} &= -(\mathbf{u}_t \cdot \nabla) \mathbf{u}' - (\mathbf{u}' \cdot \nabla) \mathbf{u}_t, \\ \frac{\partial p'}{\partial t} + \mathbf{u}_0 \cdot \nabla p' + \mathbf{u}' \cdot \nabla p_0 + \gamma p_0 \nabla \cdot \mathbf{u}' + \gamma p' \nabla \cdot \mathbf{u}_0 &= -\mathbf{u}_t \cdot \nabla p', \end{aligned} \quad (3.9)$$

where the terms with  $\mathbf{u}_t$  have been gathered on the right-hand side. The wave operator on the left-hand side only involves the steady component of the base flow while the right-hand side is responsible for the unsteady scattering of sound. These equations are solved using the time-domain, finite-difference method described in Section 2.1.

The rectangular computational domain is defined by  $-42.5L < x < 42.5L$  and  $-12L < y < 18L$  and uses a constant grid resolution of  $\Delta x = \Delta y = L/10$  for computations with acoustic wavelengths  $\lambda > L$ . For computations with smaller acoustic wavelengths, the grid resolution ensures 12 points per wavelength and the domain size in the  $y$ -direction is reduced to  $-8L < y < 15L$ . The incoming sound field (plane wave or monopole) is introduced in the domain through a 20-point wide sponge layer adjacent to the lower boundary. An additional dissipative sponge layer with 50 grid points is added along the upper boundary. The simulation is first performed without the vortex until the incident sound field is well established throughout the computational domain. The unsteady base flow  $\mathbf{u}_t$  including the vortex is then considered, with an initial position of the vortex chosen upstream of the computational domain so that it enters the domain smoothly. The pressure signals at a number of observer positions are then recorded during the traversal of the vortex.

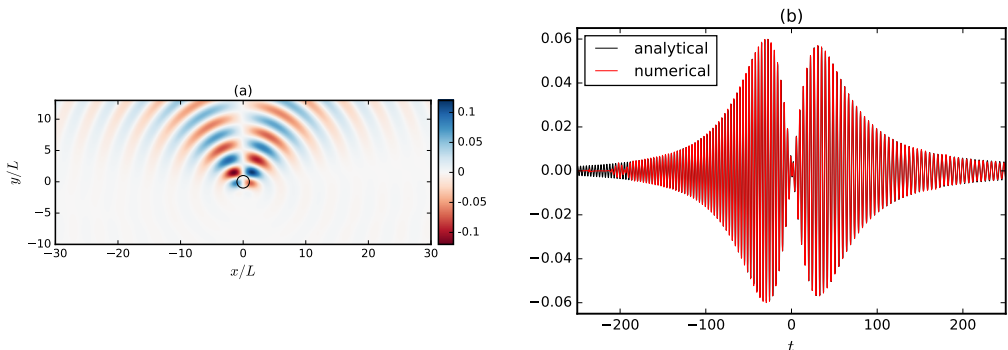


FIGURE 8. Scattered pressure  $p'_s$  for a plane wave with direction  $\alpha = \pi/2$  scattered by a vortex of strength  $M_v = 0.05$  convected at a velocity  $M_c = 0.176$ . The frequency is  $kL = \pi/2$ . (a) Snapshot of the scattered field in the time-domain numerical simulation at  $t = 0$  (the circle shows the position of the vortex). (b) Pressure signal at  $x = 0$ ,  $y = 10L$ .

### 3.3. Discussion of results

Figure 8 shows examples of results for the scattering of a plane wave by a convected vortex. The time evolution of the pressure field during the passage of the vortex is presented in Movie 1 as supplementary material. The scattered field is very similar to that observed for a stationary vortex in section 2.3 as it is composed of two beams radiating on either side of the direction  $\alpha$ . Due to the convection of the vortex, this scattered field is also moving in the  $x$ -direction. Figure 8b shows the scattered pressure recorded at a fixed position  $x = 0$ ,  $y = 10L$  so that the vortex passes just below the observer at  $t = 0$ . This signal is formed of two wavepackets associated with the two scattered beams. Apart from the initial transient in the time-domain simulation, there is excellent agreement between the two methods. The semi-analytical model will therefore be used for the remainder of this section.

Figure 9 shows the amplitude and instantaneous frequency of the scattered pressure recorded at  $x = 0$ ,  $y = 10L$  for different plane wave directions. Note that these results are plotted as functions of  $t - t_c$  where  $t_c = y_m / (U_c \tan \alpha)$  is when the direction between  $\mathbf{x}_v$  and  $\mathbf{x}$  coincides with the plane wave direction, i.e. when  $\tilde{\theta}(t) = \alpha$ . This corresponds to the time when the observer is located between the two scattered beams and the scattered pressure amplitude is close to zero.

From equation (3.5) we can see that  $|p'_s|$  is the combination of the directivity  $D(\tilde{\theta} - \alpha)$  of the vortex scattering and the cylindrical spreading  $1/\sqrt{\tilde{r}}$ . The amplitude of the scattered field changes significantly as  $\alpha$  is varied, especially the amplitude of the first wavepacket. This can be explained by noting that for  $\alpha < 90^\circ$  the first beam is closer to the  $x$ -axis and will therefore be received by the observer when the vortex is further away from the microphone. Also important is the change in amplitude for large values of  $|t|$ , i.e. when the vortex is far from the observer.

Figure 9b shows the evolution of the instantaneous frequency  $\omega_o$  defined by (3.6) as the vortex is convected past the observer. As expected the frequency of the signal received by the observer is originally higher than the source frequency  $\omega_s$  (for  $t < t_c$ ) but then becomes smaller (for  $t > t_c$ ). The transition occurs when  $\omega_o = \omega_s$ , and, as seen from equation (3.6), this corresponds indeed to  $t = t_c$  and  $\tilde{\theta} = \alpha$ . This implies that the first wavepacket always contains higher frequencies ( $\omega > \omega_s$ ) and the second wavepacket lower frequencies ( $\omega < \omega_s$ ). A subtle point to note is that whether the observer perceives frequencies above or below  $\omega_s$  is not solely explained by the vortex relative moving

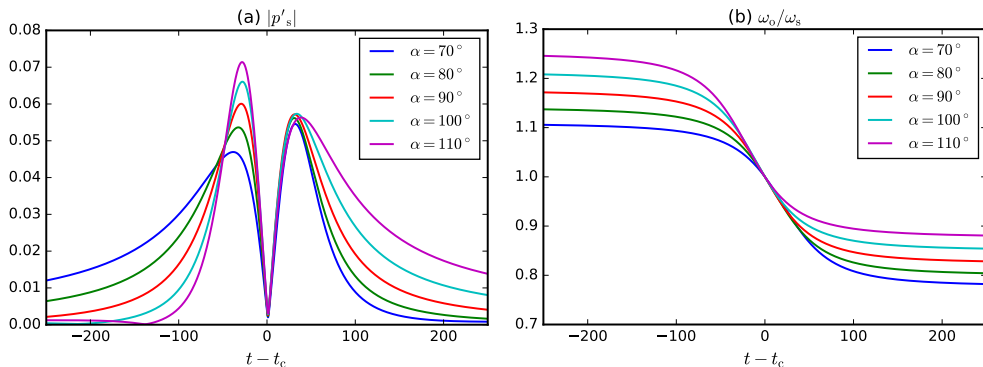


FIGURE 9. Scattered pressure given by equation (3.3) at  $x = 0, y = 10L$  for different plane wave directions  $\alpha$ . Parameters are  $M_v = 0.05$ ,  $M_c = 0.176$  and  $k_0L = \pi/2$ . (a) Pressure amplitude  $|p'_s|$ . (b) Instantaneous frequency  $\omega_o(t)$  given by (3.6) normalised by the source frequency  $\omega_s$ .

towards, or away from, the observer. Figure 7 corresponds to a situation where the vortex is moving towards the observer but the second beam which is pointing towards the observer at that particular instant will be perceived at frequencies below  $\omega_s$ . This is because the effective frequency  $\omega_o$  also includes the Doppler shift  $1/(1 + M_c \cos \alpha)$ .

Even though the incident sound field is tonal, the signal recorded by the observer contains a range of frequencies. This is described in equation (3.6) by the Doppler shift  $1 + M_c \cos \hat{\theta}(t)$  which accounts for the motion of the vortex relative to the observer. Note that the Doppler shift  $1 + M_c \cos \alpha$  expressing the frequency received by the vortex does not represent spectral broadening since the incident wave remains time harmonic in the frame of reference moving with the vortex. This shift remains constant during the passage of the vortex. Its effect is visible in Figure 9b where  $\omega_o$  increases or decreases when the direction of the plane wave is varied.

Figure 9b shows the range of frequencies received by the observer, and this is also seen in the spectrum of the signals, shown in Figure 10a where decibels (dB) are defined as  $10 \log_{10}(p'^2/p_{ref}^2)$  with a reference  $p_{ref} = 1$ . It is clear from equation (3.6), and in Figure 9b as well, that the perceived frequency  $\omega_o$  varies between  $\omega_s(1 - M_c)/(1 + M_c \cos \alpha)$  and  $\omega_s(1 + M_c)/(1 + M_c \cos \alpha)$ . This is also visible in the spectra in Figure 10a which drops sharply outside of this frequency range. These spectra all show a typical pattern<sup>†</sup> with two sidelobes located on either side of the source frequency, although the amplitudes and widths of these sidelobes vary with the direction  $\alpha$  of the plane wave.

It is possible to further understand the presence of these sidelobes in the spectrum of the scattered field. The pressure signal for  $\alpha = 90^\circ$  is shown in Figure 8. It is composed of two wavepackets (for  $t < 0$  and  $t > 0$ ) and the spectra corresponding to each wavepacket taken individually are shown in Figure 10b. This confirms that the first wavepacket is responsible for the high-frequency sidelobe ( $\omega > \omega_s$ ) whereas the second wavepacket contains the low-frequency sidelobe ( $\omega < \omega_s$ ).

To summarise, although the incident sound field is tonal both in the fixed and moving

<sup>†</sup> The peaks in the spectra are only present when considering a plane wave in two dimensions. As  $|t| \rightarrow \infty$  the instantaneous frequency  $\omega_o$  tends to  $\omega_s(1 \pm M_c)/(1 + M_c \cos \alpha)$  and  $|p'_s|$  decreases like  $1/\sqrt{r} \sim 1/|t|^{1/2}$ . This rate of decay is not sufficient to ensure the Fourier transform of  $p'_s$  is finite and singularities are expected at these two frequencies in the spectra (Davies 2012). In the case of the point source considered in Section 4 the signals will decay like  $1/r \sim 1/|t|$  when  $|t| \rightarrow \infty$  (due to the cylindrical spreading of the waves from the source to the vortex and from the vortex to the observer) and the Fourier transforms are regular.

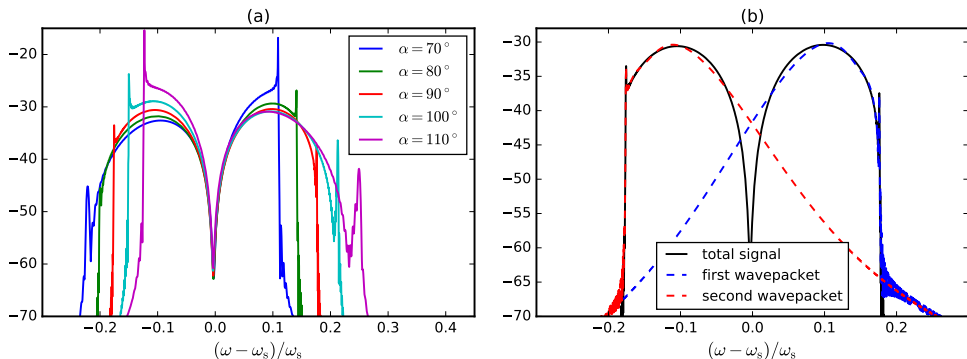


FIGURE 10. Sound pressure levels (in dB/Hz re. 1) at  $x = 0$ ,  $y = 10L$ . Parameters are  $M_v = 0.05$ ,  $M_c = 0.176$  and  $kL = \pi/2$ . (a) Comparison for different plane wave directions  $\alpha$ . (b) Individual spectra of the two wavepackets for  $\alpha = 90^\circ$ .

reference frames (because it is a plane wave), the scattered field is only tonal in the reference frame moving with the vortex. When observed in the fixed reference frame, the scattered field contains a range of frequencies. It is the Doppler shift originating from the motion of the vortex relative to the observer that is responsible for the spectral broadening of the sound field. In addition, the spectrum of the scattered field for a fixed observer is a direct consequence of the directivity of the scattering by a steady vortex. The presence of a sidelobe on each side of the source frequency can be directly attributed to the fact that the scattered field is formed of two beams at the frequency considered, with each beam generating one sidelobe.

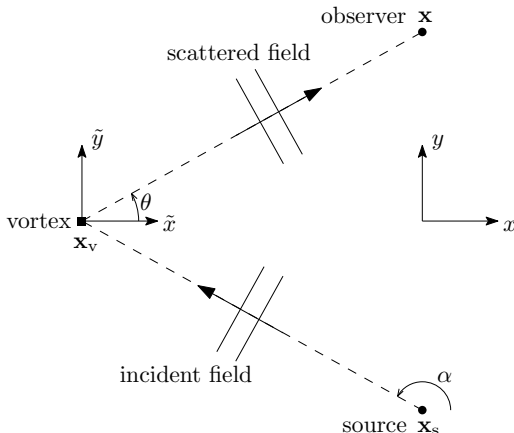


FIGURE 11. Schematic of the scattering of the sound emitted by a fixed point source by a convected vortex.

#### 4. Scattering of more complex sound fields by a convected vortex

When the incident sound field is a time-harmonic plane wave, it is still perceived as tonal noise by the vortex (although at a Doppler-shifted frequency  $\omega_v$ ). This is not the case when considering a more complex sound field, such as that generated by a point mass source fixed relative to the observer, which is the configuration considered in this section. While this sound field is tonal in the fixed frame of reference it is perceived in the moving frame of reference as containing a range of frequencies. The frequency-domain model presented in sections 2.2 and 3.1 is therefore not well adapted to this situation and it is preferable to use the time-domain numerical model instead.

##### 4.1. Doppler shifts

Before we use the numerical model, it is still useful to derive a simple expression for the Doppler shifts involved in the change in frequency between the point source, the vortex and the observer, as illustrated in Figure 11.

The observer is located at  $(\tilde{x}, \tilde{y}) = (x - U_c t, y)$  in the frame of reference moving with the vortex. It receives at time  $t$  the scattered wave emitted at time  $t_v$  by the vortex. The time delay is related to the distance covered by the wave:  $t - t_v = |\tilde{\mathbf{x}}(t) - \tilde{\mathbf{x}}_v(t_v)|/c_\infty$  (note that there is no background mean flow in the moving frame of reference so the acoustic phase speed is simply  $c_\infty$ ). By definition of the moving frame of reference  $\tilde{\mathbf{x}}_v = \mathbf{0}$  and we get

$$t_v = t - \sqrt{(x - U_c t)^2 + y^2}/c_\infty. \quad (4.1)$$

At time  $t_v$  the vortex is scattering the incident wave emitted by the source at time  $t_s$ . The corresponding time delay can be written  $t_v - t_s = |\tilde{\mathbf{x}}_v(t_v) - \tilde{\mathbf{x}}_s(t_s)|/c_\infty$ . In the moving frame of reference the source position is  $(\tilde{x}_s, \tilde{y}_s) = (x_s - U_c t, y_s)$ . The retarded time equation can then be solved for  $t_s$ :

$$t_s = \frac{1}{1 - M_c^2} \left[ t_v - \frac{M_c x_s}{c_\infty} - \frac{1}{c_\infty} \sqrt{(x_s - U_c t_v)^2 + (1 - M_c^2) y_s^2} \right]. \quad (4.2)$$

Note that this result holds provided  $|U_c| < c_\infty$ .

If the angular frequency  $\omega_s$  of the tonal noise source is sufficiently large, the vortex remains in the acoustic far field of the source. Therefore, at any given instant the incident sound field reaching the vortex can be approximated as a plane wave with direction  $\alpha$ .

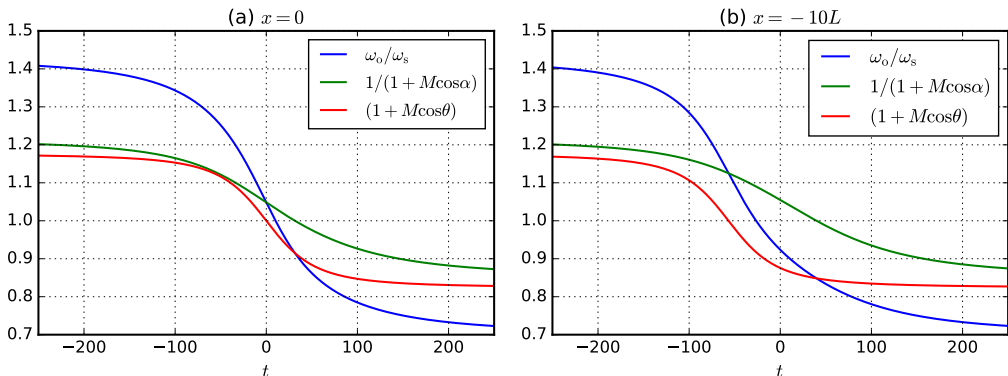


FIGURE 12. Evolution of the normalised frequency  $\omega_o/\omega_s$  for a source at  $x_s = 0$  and  $y_s = -20L$ , with an observer at  $y = 10L$  and (a)  $x = 0$  or (b)  $x = -10L$ .

This is similar to what was presented in Section 3.1 but with the knowledge that the direction and amplitude of this plane wave will vary slowly in comparison to the period  $2\pi/\omega_s$  of the sound wave. Equation (3.6) can be modified accordingly to provide an estimate for the frequency perceived by the observer

$$\omega_o(t) = \omega_s \frac{1 + M_c \cos \theta(t)}{1 + M_c \cos \alpha(t_s)}. \quad (4.3)$$

The key difference with equation (3.6) is that the Doppler shift associated with the motion of the vortex relative to the source now varies in time and depends on the angle  $\alpha(t) = \tan^{-1}[\tilde{y}_s(t)/\tilde{x}_s(t)]$ . Note that this angle is defined in terms of the position of the source at time  $t_s$  when the incident wave is generated. Equation (4.3) illustrates that the spectral broadening perceived by the observer is the combination of two Doppler shifts due to the motion of the vortex relative to the source (given by  $1/[1 + M_c \cos \alpha(t_s)]$ ) and the observer (given by  $1 + M_c \cos \theta(t)$ ).

Figure 12 shows examples of the effective frequency  $\omega_o$  together with the two separate Doppler shifts. Whereas for the plane wave the two Doppler shifts could cancel each other, with a point source they effects are compounded, resulting in a stronger deviation from the source frequency. From equation (4.3) we can see that the frequency shift will remain within the range

$$\frac{-2M_c\omega_s}{1 + M_c} \leq \omega_o - \omega_s \leq \frac{2M_c\omega_s}{1 - M_c}, \quad (4.4)$$

corresponding to when the vortex is far downstream or far upstream, respectively. The sidelobes due to the spectral broadening will be constrained within this frequency range.

#### 4.2. Time-domain numerical model

The difference with Section 3.2 is that the incoming sound field generated in the lower buffer zone now corresponds to a mass source obtained by adding the source terms  $S/c_\infty^2$  and  $S$  in equations (3.9a) and (3.9c), respectively. The source distribution is a time-harmonic point source,  $S = \delta(\mathbf{x})e^{i\omega_s t}$ , with  $\delta$  the Dirac delta function, and the theoretical expression for the sound field generated by this source can be given in terms of the velocity potential:

$$\Phi = \frac{i}{4\rho_\infty c_\infty^2 \sqrt{1 - M_c^2}} H_0^{(2)} \left[ k_0 \frac{\sqrt{x^2 + (1 - M_c^2)y^2}}{1 - M_c^2} \right] e^{i \frac{M_c}{1 - M_c^2} k_0 x + i\omega_s t}. \quad (4.5)$$

This is used to obtain the corresponding velocity  $\mathbf{u}' = \nabla\Phi$ , pressure  $p' = -\rho_\infty(\partial/\partial t + U_c\partial/\partial x)\Phi$  and density  $\rho' = p'/c_\infty^2$ . Note that it is the exact expressions for the pressure, velocity and density that are used in the buffer zone to impose the incoming sound field, and the point source itself is not part of the numerical model.

It is important to note that changing the mean flow velocity  $M_c$  will also result in a change of directivity for the incident sound field. For instance the variation in amplitude of the incident pressure field will vary with direction as  $[1 - M_c \cos(\varphi)/\sigma]/\sqrt{\sigma}$  with  $\sigma = [\cos^2 \varphi + (1 - M_c^2) \sin^2 \varphi]^{1/2}$  where  $\varphi$  is the angle measured from the  $x$  direction. This results in a significant increase (resp. decrease) of the sound field upstream (resp. downstream) of the source, which in turn influences the scattering by the convected vortex.

The same parameters as in Section 3.2 are used to define the computational domain and the finite-difference grid.

#### 4.3. The effects of the source frequency

The effect of the frequency, defined by the Helmholtz number  $kL$ , is now assessed by considering a series of simulations for  $kL = \pi/4, \pi/2, \pi, 2\pi$  and  $4\pi$ . The source is located at  $(x_s, y_s) = (0, -20L)$ . The mean flow velocity is  $M_c = 0.176$  and the vortex strength is  $M_v = 0.05$ .

Figure 13 shows three examples of instantaneous pressure fields in the time-domain simulations for three different frequencies together with the pressure signals recorded just above the source at  $(x, y) = (0, 10L)$ . The corresponding spectra, also measured at  $(x, y) = (0, 10L)$ , are shown in Figure 14. The time evolution of the pressure field during the passage of the vortex for the simulation with  $kL = \pi/2$  is also presented in Movie 2 as supplementary material.

As already observed for the steady vortex in Section 2.4, the strength of the scattered field increases with frequency. This increase of the scattering for shorter wavelengths is consistent with observations made in previous studies on the scattering by a turbulent shear layer (Candel *et al.* 1975; Kröber *et al.* 2013; Sijtsma *et al.* 2014; Ewert *et al.* 2008; McAlpine *et al.* 2013).

Another trend clearly visible in Figure 13a-c is that the two beams of the scattered field are more narrow at high frequencies. This was also observed for the steady vortex in Section 2.4. For the convected vortex this translates into pressure signals in Figure 13 formed of shorter wavepackets at high frequencies.

In Figure 14a we can observe the evolution of the position of the sidebands, measured in terms of  $\Delta\omega$ , the difference between the maximum of a sideband and the source frequency  $\omega_s$ . The position of the main high-frequency sideband only varies slightly as the source frequency increases (except for the lowest source frequency). In contrast, the low-frequency sideband tends to move slightly away from the source frequency.

Based on the discussion in Section 4.1 in terms of Doppler shifts, in particular equations (4.3–4.4), one would expect the position  $\Delta\omega$  of the sideband to scale linearly with the source frequency. However, the results in Figure 14b, where the spectra are plotted against  $(\omega - \omega_s)/\omega_s$ , clearly show that this is not the case. This is explained by the change in the scattered field as the frequency increases, as discussed above and in Section 2.4 for the steady vortex. When the source frequency is increased, the scattered beams narrow, and the wavepackets in Figure 13 shorten. This implies that most of the scattered energy is received around  $\hat{\theta} = \alpha$  which, as shown by equation (4.3) and illustrated in Figure 12, corresponds to small Doppler shifts. For the highest source frequencies, it can even be seen in Section 2.4 that the main lobe of the scattered field overlaps the direction of the incident wave. As a result, the corresponding sideband on the spectra (Figure 14a) is

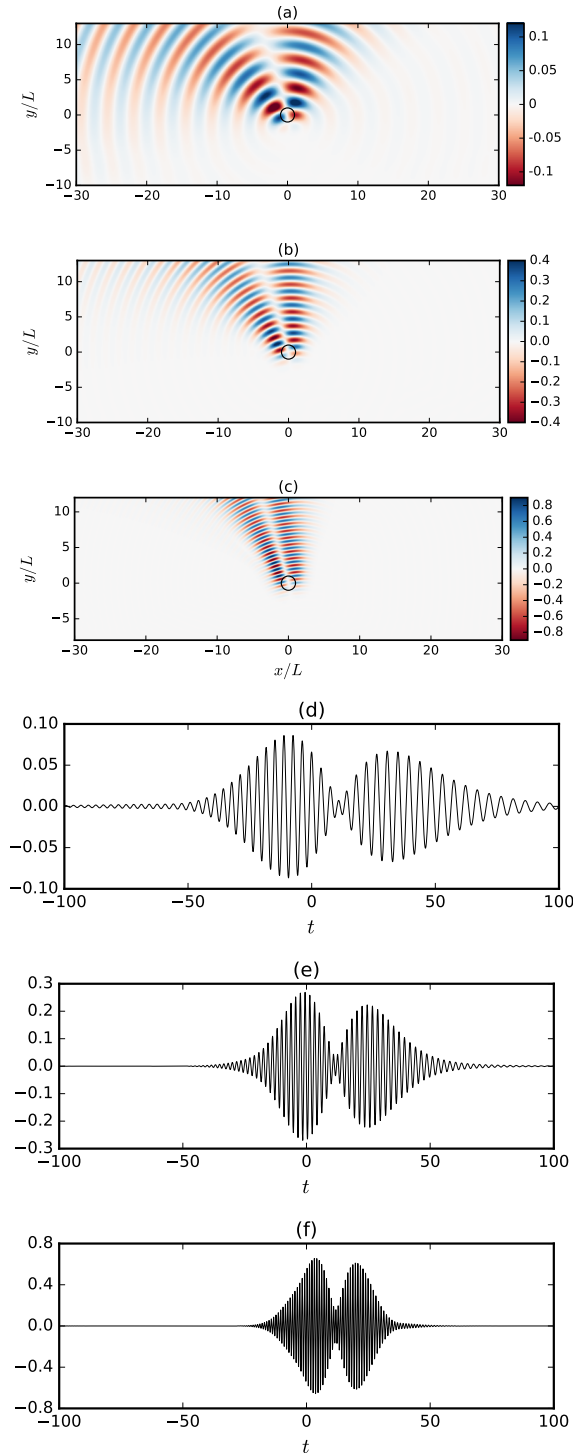


FIGURE 13. Scattered pressure for different frequencies: (a,d)  $kL = \pi/2$ , (b,e)  $kL = \pi$  and (c,f)  $kL = 2\pi$ . (a,b,c) scattered field at  $t = 0$ ; (d,e,f) scattered pressure recorded at  $x = 0, y = 10L$ . Other parameters are  $M_c = 0.176$ ,  $M_v = 0.05$ ,  $x_s = 0$  and  $y_s = -20L$ .



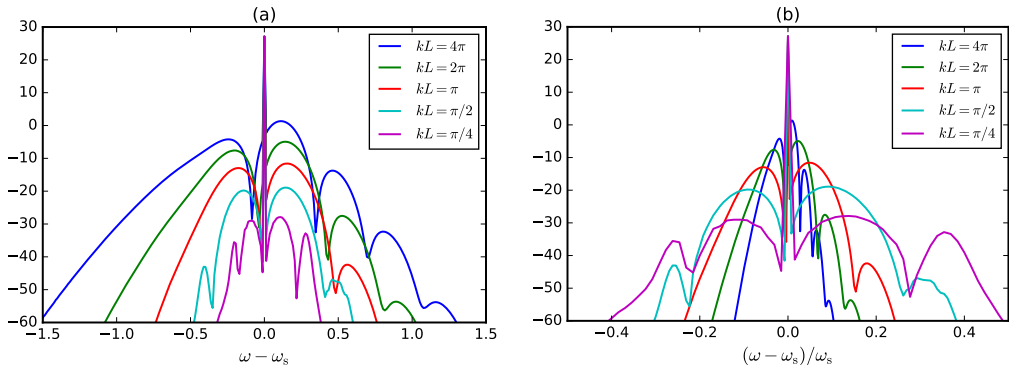


FIGURE 14. Sound Pressure Level (in dB/Hz re. 1) of the total pressure fluctuation measured at  $x = 0$ ,  $y = 10L$  for different frequencies as a function of (a) the frequency shift from the source frequency or (b) the relative frequency shift.

overlapping the peak at the source frequency. In conclusion, while increasing the source frequency results in a wider range of frequencies induced by the Doppler shifts, the scattered field is in fact perceived by the observer mostly at frequencies that are closer to the source frequency. These two opposite trends result in a weak dependence of  $\Delta\omega$  with  $\omega_s$ .

This illustrates that analysing the spectral broadening purely in terms of Doppler shift is not sufficient and that it is crucial to understand the scattering by the vortex in detail.

The previous studies on the scattering by a turbulent shear layer mentioned above observed that the source frequency mainly affects the levels and shapes of the sidebands on the spectra, but no effect on the position of their maxima is observed for the source frequencies considered. Since a shear layer is a continuous region of turbulence comprising many length scales, further work is required to fully recover all the details of the scattering in such a configuration.

#### 4.4. Effects of the convection velocity

Finally, we consider the convection velocity which has an important effect on the spectral broadening, since the Doppler shifts discussed in Sections 3.1 and 4.1 are directly controlled by the convection velocity  $U_c$ .

Before we consider the case of the monopole it is useful to revisit the case of the plane wave scattered by the vortex. In this situation it is possible to identify the effect of the convection velocity more clearly. Starting from equation (3.5) for the signal measured by a fixed observer, we can define its Fourier transform as

$$\hat{p}_s(\omega) = \frac{1}{2\pi} \int \frac{D[\tilde{\theta}(t) - \alpha]}{\sqrt{\tilde{r}(t)}} \exp\{i\omega_v[t - \tilde{r}(t)/c_\infty] - i\omega t\} dt. \quad (4.6)$$

The difficulty with this expression is that  $U_c$  is present in the definition of  $\tilde{r}$  and  $\tilde{\theta}$ . This can be avoided by formulating the integral in terms of the vortex position  $x_v$  rather than the time  $t$ . This yields

$$\hat{p}_s(\omega) = \frac{1}{2\pi U_c} \int \frac{D[\tilde{\theta}(x_v) - \alpha]}{\sqrt{\tilde{r}(x_v)}} \exp\left[-i\frac{\omega_v}{c_\infty}\tilde{r}(x_v) - i\frac{\omega - \omega_v}{U_c}x_v\right] dx_v. \quad (4.7)$$

Since the expressions for  $\tilde{r}(x_v)$  and  $\tilde{\theta}(x_v)$  are independent of  $U_c$  the influence of this parameter is more apparent.

Firstly, the factor  $1/U_c$  indicates that the overall level of the scattered pressure will decrease for increased convection velocities. This is explained easily by noting that if the vortex is convected more rapidly past the observer, the latter will receive the scattered field for a shorter period of time.

Secondly, the convection velocity influences the frequency perceived by the vortex through the Doppler shift in equation (3.2). This will change the directivity and level of the scattered field through the dependence of  $D$  on  $\omega_v$ .

In the special case when  $\alpha = 90^\circ$  this Doppler shift is inexistent and we have  $\omega_v = \omega_s$ . In this case we can see that, when written as a function of  $(\omega - \omega_s)/U_c$  and scaled by  $U_c$ , the spectrum becomes independent of  $U_c$ . This has been verified using results from the time-domain numerical simulations. Given that the parameters are non-dimensional based on  $L = 1$  and  $c_\infty = 1$ , the quantity  $\omega/U_c$  is proportional to the Strouhal number  $fL/U_c$ . The fact that  $(\omega - \omega_s)/U_c$  is a relevant parameter follows from the expression  $\omega_o = \omega_v(1 + M_c \cos \theta)$  for the Doppler shift between the vortex and the observer, see equation (3.6). If  $\omega_v = \omega_s$  it is clear that the frequency shift will scale linearly with  $U_c$ , thus resulting in wider sidebands for a higher convection velocity.

In the case of the monopole the convection velocity influences several aspects of the problem. Increasing  $U_c$  leads to a stronger Doppler shift between the source and the vortex, which results in a wider range of frequencies  $\omega_v$  perceived by the vortex. As a result, the directivity and strength of the scattered field radiated by the vortex will vary more significantly as it moves past the observer. In addition the Doppler shift from the vortex to the observer will also be more important.

Figure 15 shows a number of spectra for the scattered field for different convection velocities. The pressure signals are recorded over the same duration for the 3 velocities considered, corresponding to the time required for the vortex to travel through the computational domain at the lowest convection velocity (here  $M_c = 0.088$ ). When plotted as a function of the frequency shift  $\omega - \omega_s$ , the two trends discussed above are apparent: when  $U_c$  is increased the overall levels of the sidebands decrease while their widths increase. When the levels are scaled by  $U_c$  and the corresponding spectrum plotted as a function of  $(\omega - \omega_s)/M_c$  one obtains a good collapse of the data. The small differences visible on figure 15 can be attributed to convection effects on the incident sound field. This indicates that the simple scaling identified for the plane wave appears to be applicable, at least qualitatively, to a more complex sound field. In fact, it has been observed in several studies of the spectral broadening by turbulent shear layers that the width of the sidebands scales linearly with the convection velocity (Candel *et al.* 1975; Kröber *et al.* 2013; Sijtsma *et al.* 2014; Ewert *et al.* 2008; McAlpine *et al.* 2013), which is consistent with the present analysis. Note that in these previous studies, as the amplitude of the turbulent fluctuations is scaling with the jet velocity, the levels of the sidebands on the spectra are also increasing with the jet velocity. In the present work, the vortex Mach number  $M_v$  is kept constant for all the convection velocities considered. An increase in the vortex Mach number would lead to changes in the levels and shapes of scattered field as discussed in Section 2.4, resulting in turn in changes on the levels and shapes of the spectra.

While results in Figure 15 are for an observer just above the source, Figure 16 illustrates the differences seen for other observer positions. For a small convection velocity  $M_c = 0.088$  there is little variation between the three positions considered, apart from a small increase of the levels upstream of the source. However the differences increases significantly as the convection velocity is increased following the trend of larger sidebands upstream of the source and weaker sidebands downstream. This is explained by the change in the directivity of the incident sound field itself due to the convective

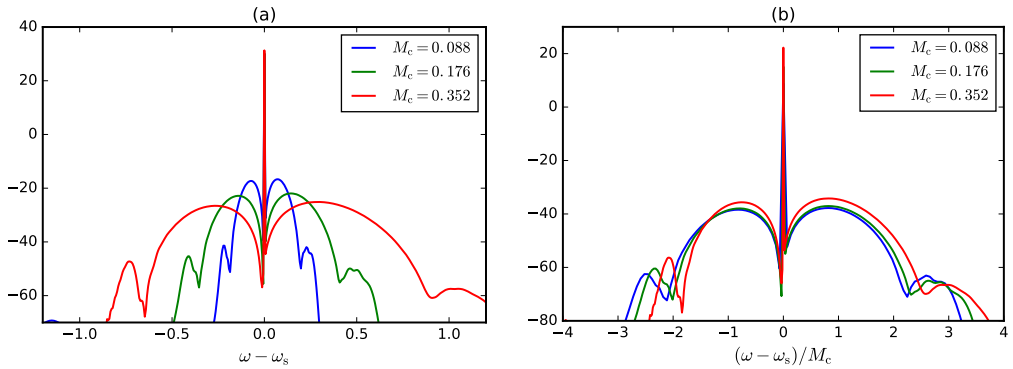


FIGURE 15. Sound Pressure Levels (in dB/Hz re. 1) of (a) the total pressure fluctuation and (b) the total pressure scaled by  $M_c$  measured at  $x = 0$ ,  $y = 10L$  for different values of the convection velocity  $M_c$ , plotted against (a) the frequency shift  $\omega - \omega_s$  and (b) the Strouhal number  $(\omega - \omega_s)/M_c$  and scaled by  $U_c$ . Other parameters are  $M_v = 0.05$  and  $kL = \pi/2$ .

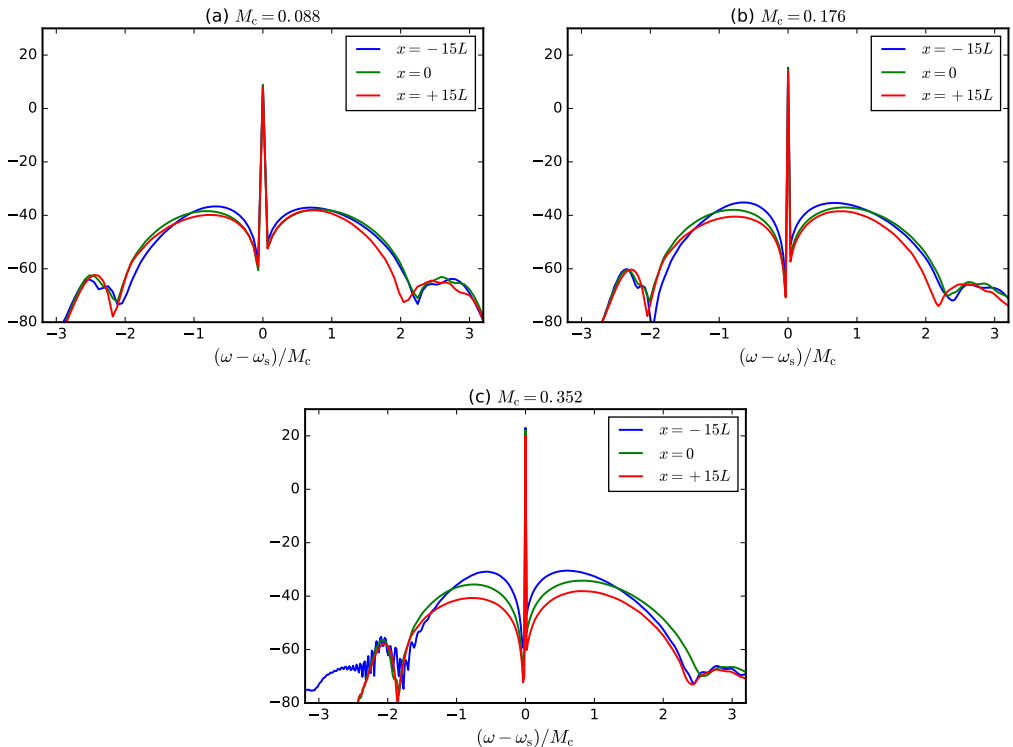


FIGURE 16. Sound Pressure Levels (in dB/Hz re. 1) of the total pressure fluctuation measured at three different positions (all with  $y = 10L$ ) and for different values of the convection velocity  $M_c$ . Note that the pressure amplitude has been scaled by  $M_c$ . Other parameters are  $M_v = 0.05$  and  $kL = \pi/2$ .

amplification which increases the amplitude of the sound upstream of the source (see Section 4.2).

## 5. Conclusion

The scattering of a harmonic, two-dimensional sound field by a single vortex has been studied in this paper to provide further insight on the mechanisms involved in the spectral broadening of the acoustic signal.

A semi-analytical model has been formulated in the frequency domain for the scattering of a plane wave by a fixed vortex, and it was extended to the case where the vortex is convected by a uniform background flow. This model has been compared against, and supplemented by, a fully numerical approach in the time domain where the linearised Euler equations are solved using an unsteady base flow. This approach is capable of simulating cases with a moving vortex and more complex incident sound fields (the sound generated by a point mass source). Compared to previous analytical work, these two models are not restricted to asymptotic regimes (in terms of vortex strength or source frequency) and have provided a detailed parametric study of the spectral broadening. The results show the drastic changes in the shape and level of the scattered field between the low- and high-frequency regimes. In addition, the two models are able to capture the asymmetry in the scattered field which is not predicted by analytical methods based on a low frequency approximation.

Overall the spectral broadening observed here stems from the combination of the spatial scattering of sound due to the refraction of waves propagating through the vortex, and two Doppler shifts induced by the motions of the vortex relative to the source, and of the observer relative to the vortex.

The fact that the spectrum exhibits sidebands is directly explained by the directivity of the scattered field which is composed of beams radiating from the vortex as it is convected past the observer. Each of these beams is perceived at frequencies above, or below, that of the sound source. Changes in the amplitude, width and shape of the sidebands can be explained by the interplay between the Doppler shifts (primarily governed by the convection velocity  $M_c$  and the source frequency  $\omega_s$ ) and the amplitude and directivity of the scattered field from the vortex (controlled by the Helmholtz number  $kL$  and the vortex strength  $M_v$ ).

For instance, it has been observed in measured data that the position of the sidebands do not vary significantly with the source frequency. In the present results, a weak dependence of the position of the sidebands with the source frequency is shown to be the result of two competing effects: the Doppler shifts lead to an increase of the sideband width when the source frequency is increased whereas the scattered beams radiated from the vortex become more narrow, which results in a reduction of the sideband width. Further work is required to explain the absence of such a dependence of the position of the sidebands with the source frequency in existing experimental results of the scattering by a shear layer.

Another trend also found in measurements and models for a region of turbulence is that the sideband width scales linearly with the convection velocity. This is also observed with a single vortex and can be explained in terms of the Doppler shifts.

Additionally, the scattering from the vortex studied here was found to conserve the acoustic energy and it was confirmed that the inhomogeneities in pressure and density in the base flow due to the vortex are not significant for the spectral broadening.

While the role of a Doppler shift has been considered in previous work to justify spectral broadening, the present work shows that a better understanding of the scattering by a single vortex (as described in Section 2) can provide further details into the underlying mechanisms. It is also striking that a number of features and trends of haystacking from

a region of turbulence are recovered when considering a single vortex, which allows for a detailed analysis to explain some of the cause and properties of the spectral broadening.

Finally, it should be noted that in all the cases considered here the amplitude of the original tone is not significantly modified by the scattering. This is because a single vortex, even with a large induced velocity  $M_v$ , is only affecting a small portion of the time signals recorded. Thus overall, the initial amplitude of the tone remains almost unchanged if the time signals are long enough. It is necessary to consider a region of turbulence, composed of a large number of vortices scattering at all time, to observe a noticeable reduction of the tone.

The logical next step is indeed to perform a similar study with a region of turbulence. This work is ongoing in two dimensions using a stochastic method to generate turbulent velocity fields with different length scales, time scales and energy spectra. Preliminary results indicate that the trends and physical processes discussed in the present paper remain relevant when considering a region of turbulence (Clair & Gabard 2016). A number of post-processing techniques can also be applied to isolate the physical mechanisms responsible for the spectral broadening. The final results will be reported in a subsequent communication. Ultimately, three-dimensional effects should be investigated. The directivity of the scattered field will be affected by the three-dimensional shape of the vortex considered (e.g., a vortex filament or a compact vortex), which will in turn affect the spectral broadening.

## **Acknowledgments**

This work was partly supported by Rolls-Royce plc through the University Technology Center in Gas Turbine Noise at the University of Southampton and funded by EPSRC Grant EP/K017551/1.

Part of this work was also performed within the framework of the Labex CeLyA of the Université de Lyon, within the programme “Investissements d’Avenir” (ANR-10-LABX-0060/ANR-11-IDEX-0007) operated by the French National Research Agency (ANR).

The authors would like to acknowledge the members of the AS/TA department of DLR for providing the PIANO solver.

The authors also acknowledge the use of the IRIDIS High Performance Computing Facility, and associated support services, at the University of Southampton in the completion of this work.

All data supporting this study are openly available from the University of Southampton repository at <http://dx.doi.org/10.5258/SOTON/xxxxx>.

## Appendix A. Derivation of Equation (2.12)

Using the decomposition of the incident plane wave in terms of Bessel functions given in equation (2.10), the total pressure can be written

$$p' = \sum_{m=-\infty}^{+\infty} \left\{ i^{-m} P J_m(kr) + A_m H_m^{(2)}(kr) \right\} e^{-im\theta} . \quad (\text{A } 1)$$

The corresponding expression for the radial acoustic velocity is

$$u'_r = \frac{i}{\rho_\infty c_\infty} \sum_{m=-\infty}^{+\infty} \left\{ i^{-m} P J'_m(kr) + A_m H_m^{(2)'}(kr) \right\} e^{-im\theta} . \quad (\text{A } 2)$$

Upon introducing these expressions in equation (2.11) the acoustic power can be written as the sum of three terms  $W_t = W_i + W_s + W_{si}$ . The first term  $W_i$  corresponds to the acoustic power of the plane wave alone, which vanishes as expected:

$$W_i = \frac{\pi r}{\rho_\infty c_\infty} |P|^2 \sum_{m=-\infty}^{+\infty} \text{Re} \{ i J_m(kr) J'_m(kr) \} = 0 . \quad (\text{A } 3)$$

The second term  $W_s$  corresponds to the power of the scattered field taken in isolation:

$$W_s = \frac{\pi r}{\rho_\infty c_\infty} \sum_{m=-\infty}^{+\infty} |A_m|^2 \text{Re} \left\{ i H_m^{(2)}(kr) H_m^{(2)'}(kr) \right\} . \quad (\text{A } 4)$$

Using the definition  $H_m^{(2)}(z) = J_m(z) - iY_m(z)$  we can write

$$\text{Re} \left\{ i H_m^{(2)}(z) H_m^{(2)'}(z) \right\} = J_m(z) Y'_m(z) - J'_m(z) Y_m(z) = \frac{2}{\pi z} , \quad (\text{A } 5)$$

where the last equality is a result for the Wronskian between  $J_m(z)$  and  $Y_m(z)$ , see equation 9.1.16 in Abramowitz & Stegun (1964). This last equation leads directly to the first expression in (2.12).

The third term  $W_{si}$  is a contribution to the total acoustic power from the interference between the incident plane wave and the scattered field:

$$W_{si} = \frac{\pi r}{\rho_\infty c_\infty} \sum_{m=-\infty}^{+\infty} \text{Re} \left\{ i^{1+m} P^* A_m J_m(kr) H_m^{(2)'}(kr) + i^{1-m} P A_m^* J'_m(kr) H_m^{(2)*}(kr) \right\} . \quad (\text{A } 6)$$

We can use the following result for the Wronskian between  $J_m(z)$  and  $H_m^{(2)}(z)$ :

$$J_m(z) H_m^{(2)'}(z) - J'_m(z) H_m^{(2)}(z) = \frac{-2i}{\pi z} , \quad (\text{A } 7)$$

to write

$$W_{si} = \frac{\pi r}{\rho_\infty c_\infty} \sum_{m=-\infty}^{+\infty} \text{Re} \left\{ i^{1+m} P^* A_m J_m(kr) H_m^{(2)'}(kr) + i^{1-m} P A_m^* J_m(kr) H_m^{(2)'}(kr)^* + P^* A_m \frac{2i^m}{\pi kr} \right\} . \quad (\text{A } 8)$$

The sum of the first two terms in the brackets is imaginary and it follows that only the last term remains. The expression can then be simplified to yield the second expression in equation (2.12).

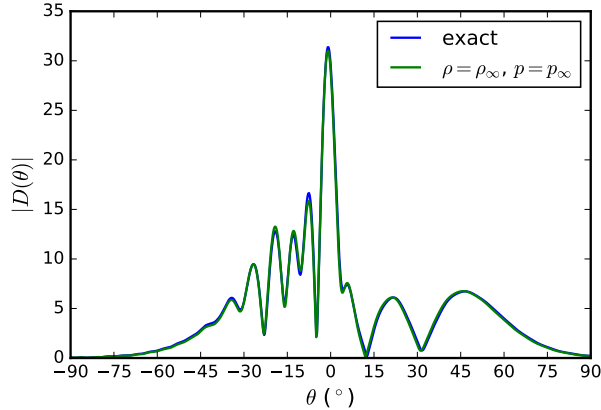


FIGURE 17. Change in directivity  $D(\theta)$  due to the approximation  $\rho = \rho_\infty$  and  $p = p_\infty$  for the base flow. Parameters are  $kL = 4\pi$  and  $M_v = 0.25$ .

### Appendix B. Influence of $p_t$ and $\rho_t$

The hypothesis that  $p_t$  and  $\rho_t$  have no significant influence can be assessed by using the semi-analytical model presented in Section 2.2 where these terms are retained. Figure 17 shows the directivity of the scattered field for a steady vortex given by equations (3.8) or by equation (3.8)a and  $\rho = \rho_\infty$  and  $p = p_\infty$ . It can be seen that the influence of the non-uniform pressure and density in the base flow has very little impact on the scattered field. This has been verified for a range of frequencies (up to  $kL = 8\pi$ ) and vortex strengths (up to  $M_v = 0.25$ ). Therefore the effect of  $p_t$  and  $\rho_t$  will be ignored in the numerical model.

Note that for a flow with significant turbulent temperature fluctuations (hot spots), this assumption does not hold as hot spots are known to contribute to scattering.

This simplification was used since the PIANO solver used here allows to consider an unsteady base flow but only for the velocity field. Previous work (Ewert *et al.* 2008, 2009) considered that for a non-heated turbulent flow, such as a cold jet, the scattering was mostly induced by the unsteady velocity fluctuations while the effect of density and pressure fluctuations was deemed negligible.

## REFERENCES

- ABRAMOWITZ, M. & STEGUN, I.A. 1964 *Handbook of mathematical functions*. National Bureau of Standards.
- BENNACEUR, I., MINCU, D.C., MARY, I., TERRACOL, M., LARCHEVÈQUE, L. & DUPONT, P. 2016 Numerical simulation of acoustic scattering by a plane turbulent shear layer: Spectral broadening study. *Comput. Fluids* **138**, 83–98.
- BOYD, J. P. 2001 *Chebyshev and Fourier spectral methods*. Courier Dover Publications.
- BROWN, E. & CLIFFORD, S. 1973 Spectral broadening of an acoustic pulse propagating through turbulence. *J. Acoust. Soc. Am.* **54**(1), 36–39.
- BROWN, E. H. 1974 Turbulent spectral broadening of backscattered acoustic pulses. *J. Acoust. Soc. Am.* **56**(5), 1398–1406.
- BROWN, E. H. & CLIFFORD, S. F. 1976 On the attenuation of sound by turbulence. *J. Acoust. Soc. Am.* **60**(4), 788–794.
- CAMPOS, L. M. B. C. 1978*a* The spectral broadening of sound by turbulent shear layers. Part 1. The transmission of sound through turbulent shear layers. *J. Fluid Mech.* **89**(4), 723–749.
- CAMPOS, L. M. B. C. 1978*b* The spectral broadening of sound by turbulent shear layers. Part 2. The spectral broadening of sound and aircraft noise. *J. Fluid Mech.* **89**(4), 751–783.
- CANDEL, S. M. 1979 Numerical solution of wave scattering problems in the parabolic approximation. *J. Fluid Mech.* **90** (3), 465–507.
- CANDEL, S. M., GUÉDEL, A. & JULIENNE, A. 1975 Refraction and scattering of sound in an open wind tunnel flow. *6th International Congress on Instrumentation in Aerospace Simulation Facilities* pp. 288–300.
- CANDEL, S. M., GUÉDEL, A. & JULIENNE, A. 1976*a* Radiation, refraction and scattering of acoustic in a free shear flow. *3rd AIAA Aero-Acoustics Conference*, AIAA Paper 76-544.
- CANDEL, S. M., JULLIAND, M. & JULIENNE, A. 1976*b* Shielding and scattering by a jet flow. *3rd AIAA Aero-Acoustics Conference*, AIAA Paper 76-545.
- CHEINET, S., EHRHARDT, L., JUVÉ, D. & BLANC-BENON, P. 2012 Unified modeling of turbulence effects on sound propagation. *J. Acoust. Soc. Am.* **132** (4), 2198–2209.
- CLAIR, V. & GABARD, G. 2016 Numerical investigation on the spectral broadening of acoustic waves by a turbulent layer. *22nd AIAA/CEAS Aeroacoustics Conference*, AIAA Paper 2016-2701.
- COLONIUS, T., LELE, S. K. & MOIN, P. 1994 The scattering of sound waves by a vortex: numerical simulations and analytical solutions. *J. Fluid Mech.* **260**, 271–298.
- DALLOIS, L., BLANC-BENON, P. & JUVÉ, D. 2001 A wide-angle parabolic equation for acoustic waves in inhomogeneous moving media: applications to atmospheric sound propagation. *J. Comput. Acoust.* **9** (2), 477–494.
- DAVIES, B. 2012 *Integral transforms and their applications*. Springer.
- EHRHARDT, L., CHEINET, S., JUVÉ, D. & BLANC-BENON, P. 2013 Evaluating a linearized Euler equations model for strong turbulence effects on sound propagation. *J. Acoust. Soc. Am.* **133** (4), 1922–1933.
- EWERT, R., KORNOW, O., DELFS, J., YIN, J., RÖBER, T. & ROSE, M. 2009 A CAA based approach to tone haystacking. *15th AIAA/CEAS Aeroacoustics Conference*, AIAA Paper 2009-3217.
- EWERT, R., KORNOW, O., TESTER, B., POWLES, C., DELFS, J. & ROSE, M. 2008 Spectral broadening of jet engine turbine tones. *14th AIAA/CEAS Aeroacoustics Conference*, AIAA Paper 2008-2940.
- FERZIGER, J. H. 1974 Low-frequency acoustic scattering from a trailing vortex. *J. Acoust. Soc. Am.* **56** (6), 1705–1707.
- FORD, R. & LLEWELYN SMITH, S. 1999 Scattering of acoustic waves by a vortex. *J. Fluid Mech.* **386**, 305–328.
- GEORGES, T. M. 1972 Acoustic ray paths through a model vortex with a viscous core. *J. Acoust. Soc. Am.* **51** (1), 206–209.
- GOEDECKE, G. H., WOOD, R. C., AUVERMANN, H. J., OSTASHEV, V. E., HAVELOCK, D. I. & TING, C. 2001 Spectral broadening of sound scattered by advecting atmospheric turbulence. *J. Acoust. Soc. Am.* **109**(5), 1923–1934.
- GOLDSTEIN, M.E. 1976 *Aeroacoustics*. McGraw-Hill.



- GUÉDEL, A. 1985 Scattering of an acoustic field by a free jet shear layer. *J. Sound Vib.* **100** (2), 285–304.
- HARGREAVES, J. A., KENDRICK, P. & VON HÜNERBEIN, S. 2014 Simulating acoustic scattering from atmospheric temperature fluctuations using a k-space method. *J. Acoust. Soc. Am.* **135** (1), 83–92.
- HATTORI, Y. & LLEWELLYN SMITH, S. G. 2002 Axisymmetric acoustic scattering by vortices. *J. Fluid Mech.* **473**, 275–294.
- HOWE, M. S. 1973 Multiple scattering of sound by turbulence and other inhomogeneities. *J. Sound Vib.* **27**(4), 455–476.
- HOWE, M. S. 1975 Contributions to the theory of aerodynamic sound, with application to excess jet noise and the theory of the flute. *J. Fluid Mech.* **71** (4), 625–673.
- KARWEIT, M., BLANC-BENON, P., JUVÉ, D. & COMTE-BELLOT, G. 1991 Simulation of the propagation of an acoustic wave through a turbulent velocity field: A study of phase variance. *J. Acoust. Soc. Am.* **89** (1), 52–62.
- KRAICHNAN, R. H. 1953 The scattering of sound in a turbulent medium. *J. Acoust. Soc. Am.* **25**(6), 1096–1104.
- KRÖBER, S., HELLMOLD, M. & KOOP, L. 2013 Experimental investigation of spectral broadening of sound waves by wind tunnel shear layers. *19th AIAA/CEAS Aeroacoustics Conference*, AIAA Paper 2013-2255.
- LEWIS, H. R. & BELLAN, P. M. 1990 Physical constraints on the coefficients of Fourier expansions in cylindrical coordinates. *J. Math. Phys.* **31** (11), 2592–2596.
- LIGHTHILL, M. J. 1953 On the energy scattered from the interaction of turbulence with sound or shock waves. *Math. Proc. Cambridge Philos. Soc.* **49**, 531–551.
- LLEWELLYN SMITH, S. G. & FORD, R. 2001*a* Three-dimensional acoustic scattering by vortical flows. I. General theory. *Phys. Fluids* **13** (10), 2876–2889.
- LLEWELLYN SMITH, S. G. & FORD, R. 2001*b* Three-dimensional acoustic scattering by vortical flows. II. Axisymmetric scattering by Hills spherical vortex. *Phys. Fluids* **13** (10), 2890–2900.
- MCALPINE, A., POWLES, C. & TESTER, B. J. 2013 A weak-scattering model for turbine-tone haystacking. *J. Sound Vib.* **332**, 38063831.
- MOHSENI, K. & COLONIUS, T. 2000 Numerical treatment of polar coordinate singularities. *J. Comput. Phys.* **157**, 787–795.
- MORSE, P.M. & INGARD, K.U. 1968 *Theoretical acoustics*. McGraw-Hill.
- O’SHEA, S. 1975 Sound scattering by a potential vortex. *J. Sound Vib.* **43**(1), 109–116.
- OSTASHEV, V. E., SALOMONS, E. M., CLIFFORD, S. F., LATAITIS, R. J., WILSON, D. K., BLANC-BENON, P. & JUVÉ, D. 2001 Sound propagation in a turbulent atmosphere near the ground: A parabolic equation approach. *J. Acoust. Soc. Am.* **109** (5), 1894–1908.
- POWLES, C. J., TESTER, B. J. & MCALPINE, A. 2011 A weak-scattering model for turbine-tone haystacking outside the cone of silence. *Int. J. Aeroacoust.* **10**(1), 17–50.
- SCHLINKER, R. H. & AMIET, R. K. 1980 Refraction and scattering of sound by a shear layer. NASA Contractor Report 3371. NASA.
- SIJTSMA, P., OERLEMANS, S., TIBBE, T., BERKEFELD, T. & SPEHR, C. 2014 Spectral broadening by shear layers of open jet wind tunnels. *20th AIAA/CEAS Aeroacoustics Conference*, AIAA Paper 2014-3178.
- TAM, C. K. W. 2012 *Computational aeroacoustics: A wave number approach*. Cambridge University Press.
- TAM, C. K. W. & DONG, Z. 1996 Radiation and outflow boundary conditions for direct computation of acoustic and flow disturbances in a nonuniform mean flow. *J. Comput. Acoust.* **4** (2), 175–201.
- THOMPSON, K. W. 1987 Time dependent boundary conditions for hyperbolic systems. *J. Comput. Phys.* **68**, 1–24.
- WILSON, D. K., OSTASHEV, V. E., GOEDECKE, G. H. & AUVERMANN, H. J. 2004 Quasi-wavelet calculations of sound scattering behind barriers. *Appl. Acoust.* **65**, 605–627.